

C16orf80 Polyclonal Antibody

catalog number: **E-AB-61522**

Note: Centrifuge before opening to ensure complete recovery of vial contents.

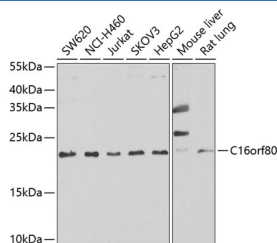
Description

Reactivity	Human;Mouse;Rat
Immunogen	Recombinant fusion protein of human C16orf80 (NP_037374.1).
Host	Rabbit
Isotype	IgG
Purification	Affinity purification
Buffer	Phosphate buffered solution, pH 7.4, containing 0.05% stabilizer and 50% glycerol.

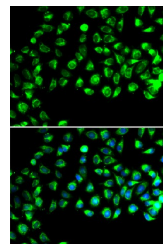
Applications

Applications	Recommended Dilution
WB	1:500-1:2000
IF	1:50-1:100

Data



Western blot analysis of extracts of various cell lines using C16orf80 Polyclonal Antibody at dilution of 1:1000.



Immunofluorescence analysis of A549 cells using C16orf80 Polyclonal Antibody

Observed-MW:23 kDa

Calculated-MW:22 kDa

Preparation & Storage

Storage	Store at -20°C Valid for 12 months. Avoid freeze / thaw cycles.
Shipping	The product is shipped with ice pack, upon receipt, store it immediately at the temperature recommended.

Background

CFAP20 (Cilia And Flagella Associated Protein 20) is a Protein Coding gene. Diseases associated with CFAP20 include Familial Atrial Fibrillation. An important paralog of this gene is CFAP20DC.

For Research Use Only