

HSP60 Polyclonal Antibody

catalog number: **E-AB-70103**

Note: Centrifuge before opening to ensure complete recovery of vial contents.

Description

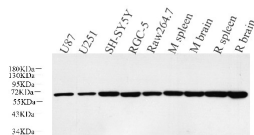
| | |
|---------------------|---|
| Reactivity | Human;Mouse;Rat |
| Immunogen | KLH conjugated Synthetic peptide corresponding to Mouse HSP60 |
| Host | Rabbit |
| Isotype | IgG |
| Purification | Affinity purification |
| Buffer | Phosphate buffered solution, pH 7.4, containing 0.05% stabilizer, 1% protein protectant and 50% glycerol. |

Applications

Recommended Dilution

| | |
|------------|---------------|
| WB | 1:2000-1:5000 |
| IHC | 1:300-1:800 |

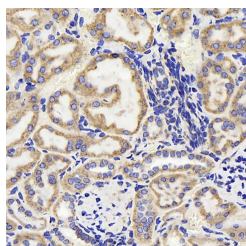
Data



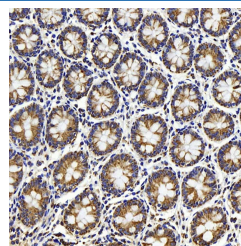
Western Blot analysis of various samples using HSP60 Polyclonal Antibody at dilution of 1:5000.

Observed-MW:60 kDa

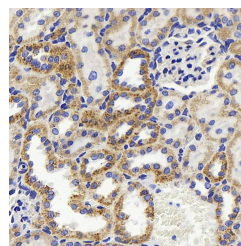
Calculated-MW:60 kDa



Immunohistochemistry analysis of paraffin-embedded Mouse kidney using HSP60 Polyclonal Antibody at dilution of 1:500.



Immunohistochemistry analysis of paraffin-embedded human colon using HSP60 Polyclonal Antibody at dilution of 1:500.



Immunohistochemistry analysis of paraffin-embedded rat kidney using HSP60 Polyclonal Antibody at dilution of 1:500.

Preparation & Storage

| | |
|-----------------|--|
| Storage | Store at -20°C Valid for 12 months. Avoid freeze / thaw cycles. |
| Shipping | The product is shipped with ice pack, upon receipt, store it immediately at the temperature recommended. |

Background

For Research Use Only

HSPD1, also known as HSP60, belongs to the chaperonin family and acts as a chaperone to enhance cell survival under physiological stresses. Hsp60 has been shown to be connected with many aspects of cell functions such as protein folding and assembling of polypeptide chains in mitochondria. Recently it has been reported that HSP60 is associated with apoptosis or inhibition of cancer cell growth. (21822415)