

Recombinant WAP5/WFDC2/HE4 Monoclonal Antibody

catalog number: **AN300427P**

Note: Centrifuge before opening to ensure complete recovery of vial contents.

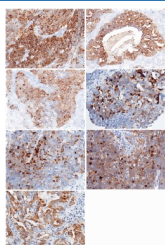
Description

Reactivity	Human
Immunogen	Recombinant Human WFDC2/HE4 protein
Host	Rabbit
Isotype	IgG
Clone	4B2
Purification	Protein A
Buffer	0.2 µm filtered solution in PBS

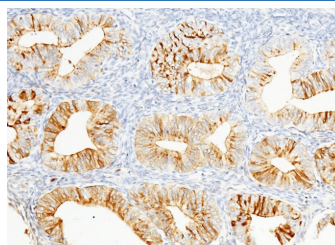
Applications Recommended Dilution

IHC-P	1:100-1:500
--------------	-------------

Data



Immunohistochemistry of paraffin-embedded human ovarian cancer (from 7 donors) using WAP5/WFDC2/HE4 Monoclonal Antibody at dilution of 1:200. Positive staining was localized to the malignant cell.



Immunohistochemistry of paraffin-embedded human endometrium using WAP5/WFDC2/HE4 Monoclonal Antibody at dilution of 1:200. Positive staining was localized to the epithelium of uterine gland.

Preparation & Storage

Storage	This antibody can be stored at 2°C-8°C for one month without detectable loss of activity. Antibody products are stable for twelve months from date of receipt when stored at -20°C to -80°C. Preservative-Free. Avoid repeated freeze-thaw cycles.
Shipping	Ice bag

Background

This gene encodes a protein that is a member of the WFDC domain family. The WFDC domain, or WAP Signature motif, contains eight cysteines forming four disulfide bonds at the core of the protein, and functions as a protease inhibitor in many family members. This gene is expressed in pulmonary epithelial cells, and was also found to be expressed in some ovarian cancers. The encoded protein is a small secretory protein, which may be involved in sperm maturation.

For Research Use Only

Toll-free: 1-888-852-8623
Web: www.elabscience.com

Tel: 1-832-243-6086
Email: techsupport@elabscience.com

Fax: 1-832-243-6017

Rev. V1.0