

GFP Monoclonal Antibody

catalog number: **E-AB-48010**

Note: Centrifuge before opening to ensure complete recovery of vial contents.

Description

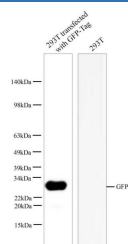
Reactivity	All
Immunogen	Recombinant GFP protein expressed by E.coli
Host	Mouse
Isotype	IgG2a
Clone	5B5
Purification	Protein A/G Purification
Buffer	Phosphate-buffered solution, pH 7.2, containing 0.05% non-protein stabilizer. Dialyze to completely remove the stabilizer prior to labeling.

Applications

Recommended Dilution

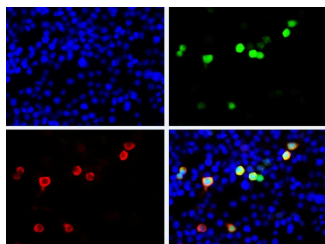
WB	1:3000-1:10000
IP	3µg/sample
IF	1:8000-16000
FCM	0.2µg

Data

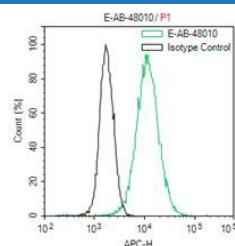


Western blot with Anti GFP Monoclonal Antibody at dilution of 1:3000. Lane 1:293T Ttransfected with GFP-Tag cell lysate,Lane 2:293T cell lysate.

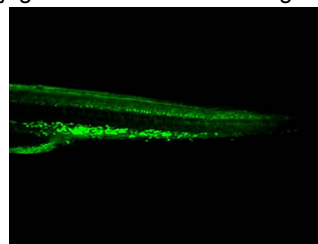
Observed-MW:32 kDa
Calculated-MW:32 kDa



Immunofluorescent analysis of 293F cells transfected with the FLAG-GFP, using anti-GFP-Tag Monoclonal Antibody at dilution of 1:8000.

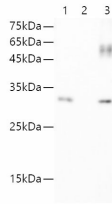


1x10⁶ CHO cells Transfected with a GFP plasmid were stained with 0.2ug Anti-GFP tag mAb(E-AB-48010) and AF647 conjugated Goat Anti-mouse IgG (H+L);Isotype Control stained with 0.2ug mouse IgG and AF647 conjugated Goat Anti-mouse IgG (H+L)



Immunohistochemical analysis of transgenic zebrafish embryo with anti-GFP antibody at dilution of 1:800.

For Research Use Only



IP Result of 293 cells transfected with GFP-Tag fusion protein, using anti-GFP-Tag mouse monoclonal antibody.
Lane 1:input, lane 2: mouse IgG2a Isotype Control, Lane 3: anti-GFP-Tag monoclonal antibody

Preparation & Storage

Storage Store at -20°C Valid for 12 months. Avoid freeze / thaw cycles.
Shipping The product is shipped with ice pack,upon receipt,store it immediately at the temperature recommended.

Background

The green fluorescent protein (GFP) is a protein that exhibits bright green fluorescence when exposed to light in the blue to ultraviolet range. It is first isolated from the jellyfish *Aequorea victoria* and is frequently used as a reporter of expression. GFP is widely used in gene expression, tracing and protein subcellular localization.

For Research Use Only

Toll-free: 1-888-852-8623
Web: www.elabscience.com

Tel: 1-832-243-6086
Email: techsupport@elabscience.com

Fax: 1-832-243-6017

Rev. V2.9