

# C6orf25 Polyclonal Antibody

Catalog Number: E-AB-90093



**Note:** Centrifuge before opening to ensure complete recovery of vial contents.

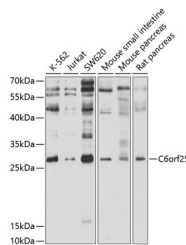
## Description

<b>Reactivity</b>	Human, Mouse, Rat
<b>Immunogen</b>	Recombinant fusion protein of human C6orf25
<b>Host</b>	Rabbit
<b>Isotype</b>	IgG
<b>Purification</b>	Affinity purification
<b>Conjugation</b>	Unconjugated
<b>Formulation</b>	PBS with 0.02% sodium azide, 50% glycerol, pH7.3.

## Applications Recommended Dilution

<b>WB</b>	1:200-1:1000
-----------	--------------

## Data



Western blot analysis of extracts of various cell lines using C6orf25 Polyclonal Antibody at 1:1000 dilution.

**Observed Mw: 26kDa**

**Calculated**

**Mw: 20kDa/21kDa/23kDa/24kDa/25kDa/26kDa**

## Preparation & Storage

**Storage** Store at -20°C. Avoid freeze/thaw cycles.

## Background

This gene is a member of the immunoglobulin (Ig) superfamily and is located in the major histocompatibility complex (MHC) class III region. The protein encoded by this gene is a glycosylated, plasma membrane-bound cell surface receptor, but soluble isoforms encoded by some transcript variants have been found in the endoplasmic reticulum and Golgi before being secreted. Multiple transcript variants encoding different isoforms have been found for this gene.

## For Research Use Only

A Reliable Research Partner in Life Science and Medicine

Toll-free: 1-888-852-8623

Web: [www.elabscience.com](http://www.elabscience.com)

Tel: 1-832-243-6086

Email: [techsupport@elabscience.com](mailto:techsupport@elabscience.com)

Fax: 1-832-243-6017