

KDM4B Polyclonal Antibody

Catalog Number: E-AB-16691



Note: Centrifuge before opening to ensure complete recovery of vial contents.

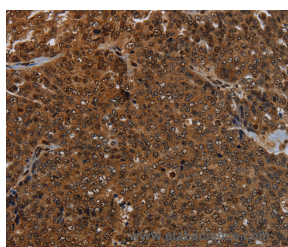
Description

Reactivity	Human
Immunogen	Synthetic peptide of human KDM4B
Host	Rabbit
Isotype	IgG
Purification	Affinity purification
Conjugation	Unconjugated
Formulation	PBS with 0.05% sodium azide and 50% glycerol, PH7.4

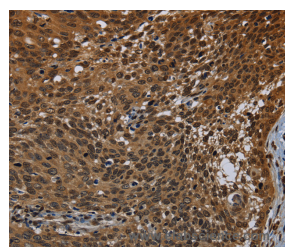
Applications Recommended Dilution

IHC	1:50-1:200
------------	------------

Data



Immunohistochemistry of paraffin-embedded Human ovarian cancer tissue using KDM4B Polyclonal Antibody at dilution 1:50



Immunohistochemistry of paraffin-embedded Human cervical cancer tissue using KDM4B Polyclonal Antibody at dilution 1:50

Preparation & Storage

Storage	Store at -20°C. Avoid freeze / thaw cycles.
----------------	---

Background

JMJD2B (JmjC domain-containing histone demethylation protein 3A) is a 1,064 amino acid protein encoded by the human gene JMJD2B. JMJD2B belongs to the JMJD2B histone demethylase family and contains one JmjC domain, one JmjN domain, two PHD-type zinc fingers and two Tudor domains. The two Tudor domains recognize and bind methylated histones and have an interdigitated structure; the unusual fold is required for its ability to bind methylated histone tails. JMJD2B is a histone demethylase that specifically demethylates Lys 9 residues of Histone H3, thereby playing a role in histone code. It does not demethylate Histone H3 Lys 4, H3 Lys 27, H3 Lys 36 or H4 Lys 20, however, and is only able to demethylate trimethylated H3 Lys-9 and has weaker activity than JMJD2A, JMJD2C and JMJD2D. JMJD2B demethyl-ation of Lysine residues will generate formaldehyde and succinate. JMJD2B is a ubiquitously expressed nuclear protein.

For Research Use Only

A Reliable Research Partner in Life Science and Medicine

Toll-free: 1-888-852-8623

Web: www.elabscience.com

Tel: 1-832-243-6086

Email: techsupport@elabscience.com

Fax: 1-832-243-6017