

GOT2 Polyclonal Antibody

Catalog Number: E-AB-11280

Note: Centrifuge before opening to ensure complete recovery of vial contents.

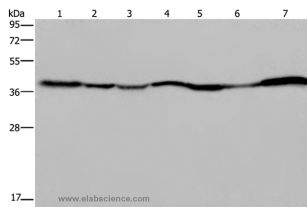
Description

| | |
|---------------------|---|
| Reactivity | Human, Mouse, Rat |
| Immunogen | Recombinant protein of human GOT2 |
| Host | Rabbit |
| Isotype | IgG |
| Purification | Affinity purification |
| Conjugation | Unconjugated |
| Formulation | PBS with 0.05% sodium azide and 50% glycerol, PH7.4 |

Applications Recommended Dilution

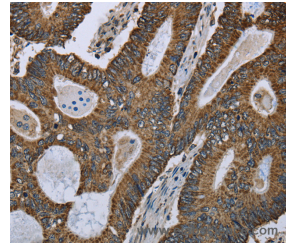
| | |
|------------|--------------|
| WB | 1:500-1:2000 |
| IHC | 1:100-1:300 |

Data

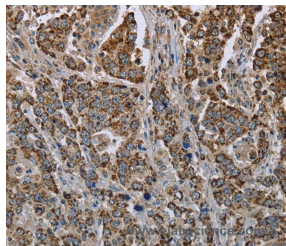


Western Blot analysis of 293T and Hela cell, Human fetal liver, Mouse spleen and heart tissue, Human fetal brain and hepatocellular carcinoma tissue using GOT2 Polyclonal Antibody at dilution of 1:400

Calculated Mw: 48kDa



Immunohistochemistry of paraffin-embedded Human colon cancer using GOT2 Polyclonal Antibody at dilution of 1:50



Immunohistochemistry of paraffin-embedded Human liver cancer using GOT2 Polyclonal Antibody at dilution of 1:50

Preparation & Storage

Storage Store at -20°C. Avoid freeze / thaw cycles.

Background

Glutamic-oxaloacetic transaminase is a pyridoxal phosphate-dependent enzyme which exists in cytoplasmic and inner-membrane mitochondrial forms, GOT1 and GOT2, respectively. GOT plays a role in amino acid metabolism and the urea

For Research Use Only

A Reliable Research Partner in Life Science and Medicine

Toll-free: 1-888-852-8623

Web: www.elabscience.com

Tel: 1-832-243-6086

Email: techsupport@elabscience.com

Fax: 1-832-243-6017

GOT2 Polyclonal Antibody

Catalog Number: E-AB-11280



and tricarboxylic acid cycles. The two enzymes are homodimeric and show close homology. Two transcript variants encoding different isoforms have been found for this gene.

For Research Use Only

A Reliable Research Partner in Life Science and Medicine

Toll-free: 1-888-852-8623

Tel: 1-832-243-6086

Fax: 1-832-243-6017

Web: www.elabscience.com

Email: techsupport@elabscience.com