

Recombinant BCL6 Monoclonal Antibody

catalog number: **AN301444L**

Note: Centrifuge before opening to ensure complete recovery of vial contents.

Description

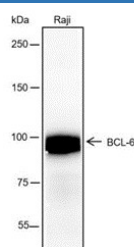
Reactivity	Human;
Immunogen	Recombinant human BCL6 fragment
Host	Rabbit
Isotype	IgG, κ
Clone	A139
Purification	Protein A purified
Buffer	PBS, 50% glycerol, 0.05% Proclin 300, 0.05% protein protectant.

Applications

Recommended Dilution

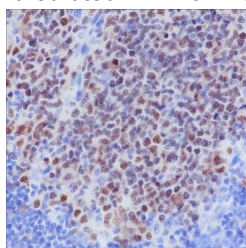
WB	1:1000-1:5000
IHC	1:100-1:500

Data

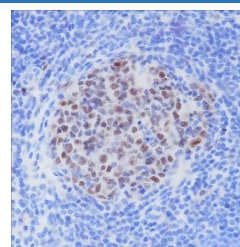


Western Blot with BCL6 Monoclonal Antibody at dilution of 1:5000. Lane 1: Raji

Observed-MW:78 kDa
Calculated-MW:79 kDa



Immunohistochemistry of paraffin-embedded Human tonsil using BCL6 Monoclonal Antibody at dilution of 1:500.



Immunohistochemistry of paraffin-embedded Lymphoid nodule (Human colon) using BCL6 Monoclonal Antibody at dilution of 1:500.

Preparation & Storage

Storage	Store at -20°C Valid for 12 months. Avoid freeze / thaw cycles.
Shipping	Ice bag

Background

Transcriptional repressor mainly required for germinal center (GC) formation and antibody affinity maturation which has different mechanisms of action specific to the lineage and biological functions. In response to genotoxic stress, controls cell cycle arrest in GC B-cells in both p53/TP53-dependent and -independent manners. Besides, also controls neurogenesis through the alteration of the composition of NOTCH-dependent transcriptional complexes at selective NOTCH targets, such as HES5, including the recruitment of the deacetylase SIRT1 and resulting in an epigenetic silencing leading to neuronal differentiation.

For Research Use Only

Toll-free: 1-888-852-8623
Web: www.elabscience.com

Tel: 1-832-243-6086
Email: techsupport@elabscience.com

Fax: 1-832-243-6017

Rev. V1.0