

Recombinant CRABP2 Monoclonal Antibody

catalog number: **AN300227P**

Note: Centrifuge before opening to ensure complete recovery of vial contents.

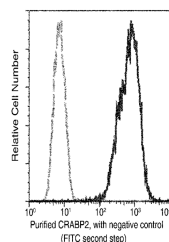
Description

| | |
|---------------------|----------------------------------|
| Reactivity | Human |
| Immunogen | Recombinant Human CRABP2 protein |
| Host | Rabbit |
| Isotype | IgG |
| Clone | 7A13 |
| Purification | Protein A |
| Buffer | 0.2 µm filtered solution in PBS |

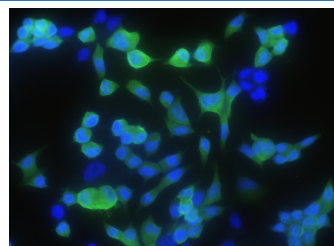
Applications

| Applications | Recommended Dilution |
|---------------|-------------------------|
| WB | 1:500-1:1000 |
| FCM | 1:100-1:500 |
| ICC/IF | 1:100-1:500 |
| IP | 0.1-0.5 µL/mg of lysate |

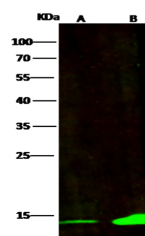
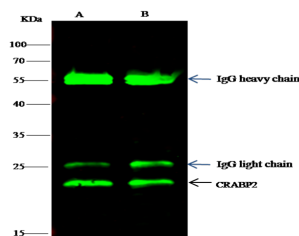
Data



Flow cytometric analysis of Human CRABP2 expression on MCF-7 cells. The cells were stained with purified anti-Human CRABP2, then a FITC-conjugated second step antibody. The fluorescence histograms were derived from gated events with the forward and side light-scatter characteristics of intact cells.



Immunofluorescence analysis of Human CRABP2 in MCF7 cells. Cells were fixed with 4% PFA, permeabilized with 1% Triton X-100 in PBS, blocked with 10% serum, and incubated with Rabbit anti-Human CRABP2 Monoclonal Antibody (1:300) at 4°C overnight. Then cells were stained with the Alexa Fluor® 488-conjugated Goat Anti-rabbit IgG secondary antibody (green) and counterstained with DAPI for nuclear staining (blue). Positive staining was localized to cytoplasm.



For Research Use Only

Immunoprecipitation analysis using 0.5 µL anti-CRABP2 Monoclonal Antibody and 60 µg of Immunomagnetic beads Protein G. Western blot was performed from the immunoprecipitate using CRABP2 Monoclonal Antibody at a dilution of 1:500. Lane A:0.5 mg 293T Whole Cell Lysate Lane B:0.5 mg Raji Whole Cell Lysate

Western Blot with CRABP2 Monoclonal Antibody at dilution of 1:500. Lane A: 293T Whole Cell Lysate, Lane B: MCF7 Whole Cell Lysate, Lysates/proteins at 30 µg per lane.

Observed-MW:16 kDa
Calculated-MW:16 kDa

Observed-MW:16 kDa
Calculated-MW:16 kDa

Preparation & Storage

Storage This antibody can be stored at 2°C-8°C for one month without detectable loss of activity. Antibody products are stable for twelve months from date of receipt when stored at -20°C to -80°C. Preservative-Free. Avoid repeated freeze-thaw cycles.

Shipping Ice bag

Background

This gene encodes a member of the retinoic acid (RA, a form of vitamin A) binding protein family and lipocalin/cytosolic fatty-acid binding protein family. The protein is a cytosol-to-nuclear shuttling protein, which facilitates RA binding to its cognate receptor complex and transfer to the nucleus. It is involved in the retinoid signaling pathway, and is associated with increased circulating low-density lipoprotein cholesterol. Alternatively spliced transcript variants encoding the same protein have been found for this gene.