

Recombinant CD3E Monoclonal Antibody

catalog number: **AN301993L**

Note: Centrifuge before opening to ensure complete recovery of vial contents.

Description

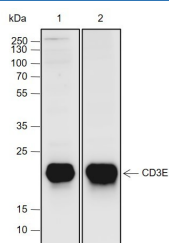
Reactivity	Mouse
Immunogen	Peptide. This information is proprietary to PTMab.
Host	Rabbit
Isotype	IgG, κ
Clone	A713
Purification	Protein A purified
Buffer	PBS, 50% glycerol, 0.05% Proclin 300, 0.05% protein protectant.

Applications

Recommended Dilution

WB	1:2000-1:5000
-----------	---------------

Data



Western Blot with CD3E Monoclonal Antibody at dilution of 1:2000. Lane 1: EL4.IL2, Lane 2: Mouse thymus

Observed-MW:22 kDa

Calculated-MW:21 kDa

Preparation & Storage

Storage	Store at -20°C Valid for 12 months. Avoid freeze / thaw cycles.
Shipping	Ice bag

Background

When T cells encounter antigens via the T cell receptor (TCR), information about the quantity and quality of antigens is relayed to the intracellular signal transduction machinery. This activation process depends mainly on CD3 (Cluster of Differentiation 3), a multiunit protein complex that directly associates with the TCR. CD3 is composed of four polypeptides: ζ , γ , ϵ , and δ . Each of these polypeptides contains at least one immunoreceptor tyrosine-based activation motif (ITAM). Engagement of the TCR complex with foreign antigens induces tyrosine phosphorylation in the ITAM motifs and phosphorylated ITAMs function as docking sites for signaling molecules such as ZAP-70 and the p85 subunit of PI-3 kinase. TCR ligation also induces a conformational change in CD3 ϵ , such that a proline region is exposed and then associates with the adaptor protein Nck.

For Research Use Only