

PFDN1/Prefoldin subunit 1 Monoclonal Antibody

catalog number: AN200147P

Note: Centrifuge before opening to ensure complete recovery of vial contents.

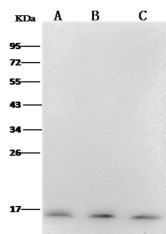
Description

Reactivity	Human
Immunogen	Recombinant Human PFDN1/Prefoldin subunit 1 Protein
Host	Mouse
Isotype	IgG1
Clone	10C6
Purification	Protein A
Buffer	0.2 µm filtered solution in PBS

Applications Recommended Dilution

WB	1:500-1:2000
-----------	--------------

Data



Western Blot with PFDN1/Prefoldin subunit 1 Monoclonal Antibody at dilution of 1:500. Lane A: 293T Whole Cell Lysate, Lane B: Hela Whole Cell Lysate, Lane C: Jurkat Whole Cell Lysate, Lysates/proteins at 30 µg per lane.

Observed-MW:14 kDa

Calculated-MW:14 kDa

Preparation & Storage

Storage	This antibody can be stored at 2°C-8°C for one month without detectable loss of activity. Antibody products are stable for twelve months from date of receipt when stored at -20°C to -80°C. Preservative-Free. Avoid repeated freeze-thaw cycles.
Shipping	Ice bag

Background

This gene encodes a member of the prefoldin beta subunit family. The encoded protein is one of six subunits of prefoldin, a molecular chaperone complex that binds and stabilizes newly synthesized polypeptides, thereby allowing them to fold correctly. The complex, consisting of two alpha and four beta subunits, forms a double beta barrel assembly with six protruding coiled-coils.

For Research Use Only