

Recombinant Phospho-Stat6 (Tyr641) Monoclonal Antibody

catalog number: **AN300083L**

Note: Centrifuge before opening to ensure complete recovery of vial contents.

Description

Reactivity	Human
Immunogen	A synthetic phosphopeptide corresponding to residues around Tyr641 of the Human Stat6
Host	Rabbit
Isotype	IgG
Clone	A1193
Purification	Protein A
Buffer	10 mM sodium HEPES, 150 mM NaCl, 100 µg/mL protein protectant, 50% glycerol, pH 7.5

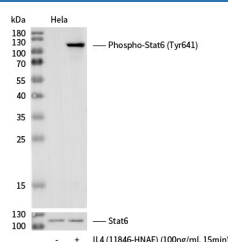
Applications

Recommended Dilution

WB

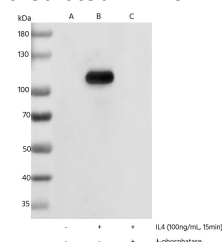
1:2000-1:20000

Data



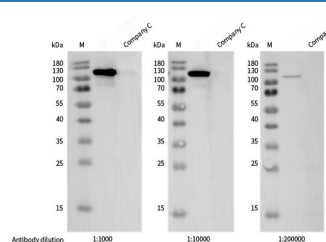
Western blot analysis of extracts from serum-starved HeLa, untreated (-) or treated with IL4 (100 ng/mL, 15min; +), using Phospho-Stat6 (Tyr641) Monoclonal Antibody at 1:10000 dilution (upper) or Anti-STAT6 Antibody, Rabbit PAb at 1:1000 dilution (lower).

Observed-MW:110 kDa
Calculated-MW:94 kDa



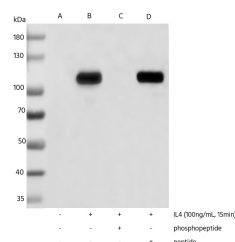
Western blot analysis of extracts from serum-starved HeLa, untreated (line A); treated with IL4(100 ng/mL, 15min)(line B); treated with IL4 and λ-phosphatase (line C) using Phospho-Stat6 (Tyr641) Monoclonal Antibody at 1:10000 dilution.

Observed-MW:110 kDa
Calculated-MW:94 kDa



Western blot analysis of extracts from serum-starved HeLa, treated with IL4(100 ng/mL, 15 min), using Phospho-Stat6 (Tyr641) Monoclonal Antibody and other brands' antibodies (Company C) at dilution of 1:1000, 1:10000 and 1:200000.

Observed-MW:110 kDa
Calculated-MW:94 kDa



Western blot analysis of extracts from serum-starved HeLa, untreated (line A); treated with IL4(100 ng/mL, 15min), without peptide (line B) or antigen-specific phosphopeptide (line C) or antigen-specific peptide (line D) using Phospho-Stat6 (Tyr641) Monoclonal Antibody at 1:10000 dilution.

Observed-MW:110 kDa
Calculated-MW:94 kDa

Preparation & Storage

For Research Use Only

Toll-free: 1-888-852-8623
Web: www.elabscience.com

Tel: 1-832-243-6086
Email: techsupport@elabscience.com

Fax: 1-832-243-6017

Rev. V1.2

Storage

This antibody can be stored at 2°C-8°C for one month without detectable loss of activity. Antibody products are stable for twelve months from date of receipt when stored at -20°C to -80°C. Preservative-Free. Avoid repeated freeze-thaw cycles.

Shipping

Ice bag

Background

The protein encoded by this gene is a member of the STAT family of transcription factors. In response to cytokines and growth factors, STAT family members are phosphorylated by the receptor associated kinases, and then form homo- or heterodimers that translocate to the cell nucleus where they act as transcription activators. This protein plays a central role in exerting IL4 mediated biological responses. It is found to induce the expression of BCL2L1/BCL-X(L), which is responsible for the anti-apoptotic activity of IL4. Knockout studies in mice suggested the roles of this gene in differentiation of T helper 2 (Th2) cells, expression of cell surface markers, and class switch of immunoglobulins. Alternative splicing results in multiple transcript variants.

For Research Use Only