

## Recombinant Cleaved PARP1 p85 Monoclonal Antibody

catalog number: **AN301495L**

**Note:** Centrifuge before opening to ensure complete recovery of vial contents.

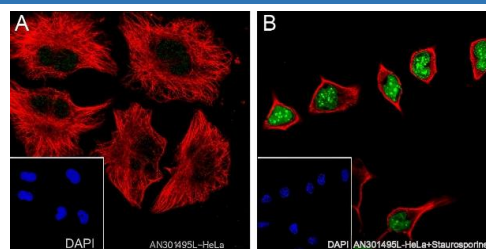
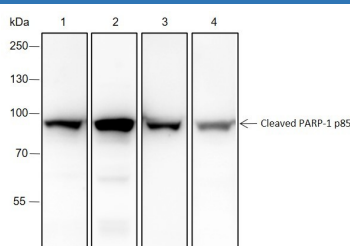
### Description

<b>Reactivity</b>	Human;Rat;Mouse
<b>Immunogen</b>	Recombinant human Cleaved PARP1 p85 fragment
<b>Host</b>	Rabbit
<b>Isotype</b>	IgG, $\kappa$
<b>Clone</b>	A190
<b>Purification</b>	Protein A purified
<b>Buffer</b>	PBS, 50% glycerol, 0.05% Proclin 300, 0.05% protein protectant.

### Applications

Applications	Recommended Dilution
<b>WB</b>	1:500-1:2000
<b>IF</b>	1:100-1:200
<b>FCM</b>	1:50-1:100
<b>IP</b>	1:50

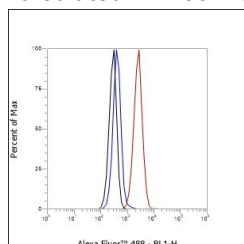
### Data



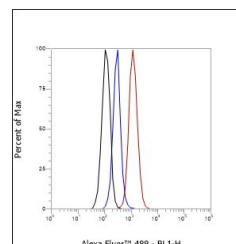
Western Blot with Cleaved PARP1 p85 Monoclonal Antibody Immunofluorescent analysis of (100% methanol) fixed HeLa at dilution of 1:2000. Lane 1: HeLa, Lane 2: Jurkat, Lane 3: cells using anti-Cleaved PARP1 p85 Monoclonal Antibody at EL4.IL2, Lane 4: PC-12

**Observed-MW:89kDa**

**Calculated-MW:85kDa**



Flow cytometric analysis of human Cleaved PARP1 p85 expression on HeLa cells. Cells were stained with purified anti-Human Cleaved PARP1 p85, then a Alexa Fluor 488-conjugated second step antibody. The histogram were derived from events with the forward and side light-scatter characteristics of intact cells.



Flow cytometric analysis of human Cleaved PARP1 p85 expression on NIH/3T3 cells. Cells were stained with purified anti-Human Cleaved PARP1 p85, then a Alexa Fluor 488-conjugated second step antibody. The histogram were derived from events with the forward and side light-scatter characteristics of intact cells.

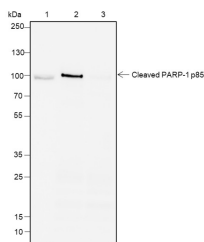
### For Research Use Only

Toll-free: 1-888-852-8623  
Web: [www.elabscience.com](http://www.elabscience.com)

Tel: 1-832-243-6086  
Email: [techsupport@elabscience.com](mailto:techsupport@elabscience.com)

Fax: 1-832-243-6017

Rev. V1.0



Immunoprecipitation analysis using anti-Cleaved PARP1 p85 Monoclonal Antibody. Western blot was performed from the immunoprecipitate using Cleaved PARP1 p85 Monoclonal Antibody at a dilution of 1:50. Lane 1: 10% Input, Lane 2: Cleaved PARP1 p85 Monoclonal Antibody, Lane 3: Rabbit monoclonal IgG Isotype

**Observed-MW:89kDa**

**Calculated-MW:85kDa**

## Preparation & Storage

<b>Storage</b>	Store at -20°C Valid for 12 months. Avoid freeze / thaw cycles.
<b>Shipping</b>	Ice bag

## Background

Poly-ADP-ribosyltransferase that mediates poly-ADP-ribosylation of proteins and plays a key role in DNA repair. Mediates glutamate, aspartate, serine or tyrosine ADP-ribosylation of proteins: the ADP-D-ribosyl group of NAD<sup>+</sup> is transferred to the acceptor carboxyl group of target residues and further ADP-ribosyl groups are transferred to the 2'-position of the terminal adenosine moiety, building up a polymer with an average chain length of 20-30 units. Serine ADP-ribosylation of proteins constitutes the primary form of ADP-ribosylation of proteins in response to DNA damage.

## For Research Use Only

Toll-free: 1-888-852-8623  
Web: [www.elabscience.com](http://www.elabscience.com)

Tel: 1-832-243-6086  
Email: [techsupport@elabscience.com](mailto:techsupport@elabscience.com)

Fax: 1-832-243-6017

Rev. V1.0