

## Recombinant beta-2 Adrenergic Receptor Monoclonal Antibody

catalog number: **AN301445L**

**Note:** Centrifuge before opening to ensure complete recovery of vial contents.

### Description

<b>Reactivity</b>	Human;Rat;Mouse
<b>Immunogen</b>	Recombinant human beta-2 Adrenergic Receptor fragment
<b>Host</b>	Rabbit
<b>Isotype</b>	IgG, $\kappa$
<b>Clone</b>	A140
<b>Purification</b>	Protein A purified
<b>Buffer</b>	PBS, 50% glycerol, 0.05% Proclin 300, 0.05% protein protectant.

### Applications Recommended Dilution

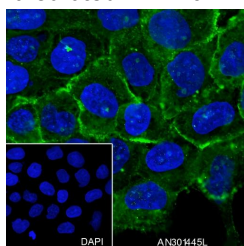
<b>WB</b>	1:500-1:2000
<b>IF</b>	1:100
<b>FCM</b>	1:50-1:100

### Data

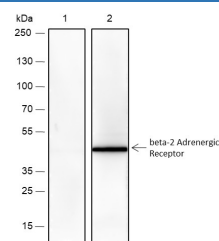


Western Blot with beta-2 Adrenergic Receptor Monoclonal Antibody at dilution of 1:2000. Lane 1: A431, Lane 2: MCF-7, Lane 3: MDA-MB-231, Lane 4: Rat kidney, Lane 5: Mouse kidney

**Observed-MW:46 kDa**  
**Calculated-MW:46 kDa**

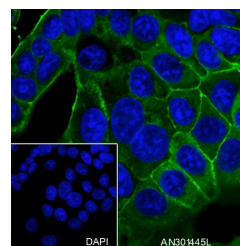


Immunofluorescent analysis of (100% Ice-cold methanol) fixed A431 cells using anti-beta-2 Adrenergic Receptor Monoclonal Antibody at dilution of 1:100.

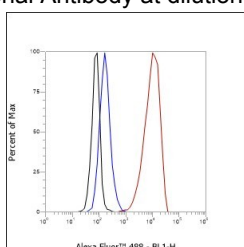


Western Blot with beta-2 Adrenergic Receptor Monoclonal Antibody at dilution of 1:1000. Lane 1: Mouse kidney

**Observed-MW:46 kDa**  
**Calculated-MW:46 kDa**



Immunofluorescent analysis of (100% Ice-cold methanol) fixed MCF7 cells using anti-beta-2 Adrenergic Receptor Monoclonal Antibody at dilution of 1:100.



### For Research Use Only

Toll-free: 1-888-852-8623  
Web: [www.elabscience.com](http://www.elabscience.com)

Tel: 1-832-243-6086  
Email: [techsupport@elabscience.com](mailto:techsupport@elabscience.com)

Fax: 1-832-243-6017

Rev. V1.0

Flow cytometric analysis of human beta-2 Adrenergic Receptor expression on SH-SY5Y cells. Cells were stained with purified anti-Human beta-2 Adrenergic Receptor, then a Alexa Fluor 488-conjugated second step antibody. The histogram were derived from events with the forward and side light-scatter characteristics of intact cells.

## Preparation & Storage

<b>Storage</b>	Store at -20°C Valid for 12 months. Avoid freeze / thaw cycles.
<b>Shipping</b>	Ice bag

## Background

Beta-adrenergic receptors mediate the catecholamine-induced activation of adenylate cyclase through the action of G proteins. The beta-2-adrenergic receptor binds epinephrine with an approximately 30-fold greater affinity than it does norepinephrine.

## For Research Use Only

Toll-free: 1-888-852-8623  
Web: [www.elabscience.com](http://www.elabscience.com)

Tel: 1-832-243-6086  
Email: [techsupport@elabscience.com](mailto:techsupport@elabscience.com)

Fax: 1-832-243-6017

Rev. V1.0