

Recombinant Yes1 Monoclonal Antibody

catalog number: **AN300634L**

Note: Centrifuge before opening to ensure complete recovery of vial contents.

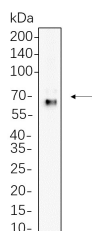
Description

Reactivity	Human
Immunogen	Recombinant Human Yes1 protein
Host	Rabbit
Isotype	IgG, κ
Clone	B569
Purification	Protein A
Buffer	PBS, 50% glycerol, 0.05% Proclin 300, 0.05% protein protectant.

Applications Recommended Dilution

IHC	1:200-1:1000
WB	1:2000-1:10000
IF	1:200-1:1000
ELISA	1:5000-1:20000
IP	1:50-1:200

Data



Western Blot with Recombinant Yes1 Monoclonal Antibody at dilution of 1:1000 dilution. Lane A: K562 whole cell lysate.

Observed-MW:61 kDa

Calculated-MW:61 kDa

Preparation & Storage

Storage	Store at -20°C Valid for 12 months. Avoid freeze / thaw cycles.
Shipping	Ice bag

Background

This gene is the cellular homolog of the Yamaguchi sarcoma virus oncogene. The encoded protein has tyrosine kinase activity and belongs to the src family of proteins. This gene lies in close proximity to thymidylate synthase gene on chromosome 18, and a corresponding pseudogene has been found on chromosome 22.

For Research Use Only

Toll-free: 1-888-852-8623
Web: www.elabscience.com

Tel: 1-832-243-6086
Email: techsupport@elabscience.com

Fax: 1-832-243-6017

Rev. V1.2