

## RRM1 Monoclonal Antibody

**catalog number: AN200083P**

**Note:** Centrifuge before opening to ensure complete recovery of vial contents.

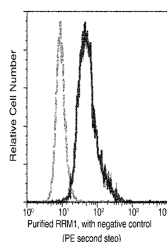
### Description

<b>Reactivity</b>	Human
<b>Immunogen</b>	Recombinant Human RRM1 protein
<b>Host</b>	Mouse
<b>Isotype</b>	IgG1
<b>Clone</b>	2D11
<b>Purification</b>	Protein A
<b>Buffer</b>	0.2 µm filtered solution in PBS

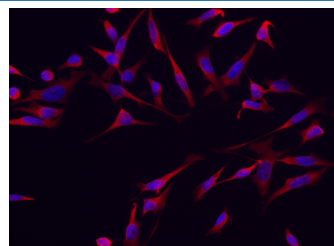
### Applications

Applications	Recommended Dilution
ICC/IF	1:20-1:100
FCM	1:25-1:100

### Data



Flow cytometric analysis of Human RRM1 expression on HeLa cells. The cells were stained with purified anti-Human RRM1, then a PE-conjugated second step antibody. The fluorescence histograms were derived from gated events with the forward and side light-scatter characteristics of intact cells.



Immunofluorescence analysis of Human RRM1 in HeLa cells. Cells were fixed with 4% PFA, permeabilized with 0.3% Triton X-100 in PBS, blocked with 10% serum, and incubated with Mouse anti-Human RRM1 Monoclonal Antibody (1:60) at 37°C 1 hour. Then cells were stained with the Alexa Fluor® 594-conjugated Goat Anti-mouse IgG secondary antibody (red) and counterstained with DAPI for nuclear staining (blue). Positive staining was localized to cytoplasm.

### Preparation & Storage

<b>Storage</b>	This antibody can be stored at 2°C-8°C for one month without detectable loss of activity. Antibody products are stable for twelve months from date of receipt when stored at -20°C to -80°C. Preservative-Free. Avoid repeated freeze-thaw cycles.
<b>Shipping</b>	Ice bag

### Background

This gene encodes the large and catalytic subunit of ribonucleotide reductase, an enzyme essential for the conversion of ribonucleotides into deoxyribonucleotides. A pool of available deoxyribonucleotides is important for DNA replication during S phase of the cell cycle as well as multiple DNA repair processes. Alternative splicing results in multiple transcript variants.

### For Research Use Only