

Recombinant Histone H4 Monoclonal Antibody

catalog number: **AN301109L**

Note: Centrifuge before opening to ensure complete recovery of vial contents.

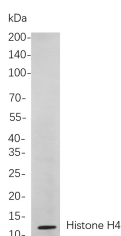
Description

Reactivity	Human;Mouse;Rat
Immunogen	Recombinant Human Histone H4 protein
Host	Rabbit
Isotype	IgG, κ
Clone	B864
Purification	Protein A
Buffer	PBS, 50% glycerol, 0.05% Proclin 300, 0.05% protein protectant.

Applications

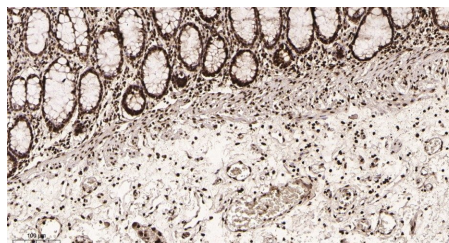
Applications	Recommended Dilution
IHC	1:200-1000
WB	1:1000-5000
IF	1:200-1000
ELISA	1:5000-20000
IP	1:50-200
CHIP	1:50-1:100
Cut&Tag	1:50-1:100

Data

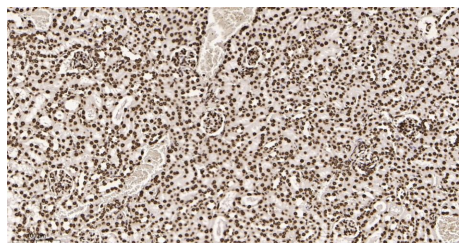


Western Blot with Recombinant Histone H4 Monoclonal Antibody at dilution of 1:1000 dilution. Lane A: Hela cells.

Observed-MW:11 kDa
Calculated-MW:11 kDa



Immunohistochemistry of paraffin-embedded human colon tissue using Recombinant Histone H4 Monoclonal Antibody at dilution of 1:200.



Immunohistochemistry of paraffin-embedded mouse kidney tissue using Recombinant Histone H4 Monoclonal Antibody at dilution of 1:200.

Preparation & Storage

Storage	Store at -20°C Valid for 12 months. Avoid freeze / thaw cycles.
Shipping	Ice bag

For Research Use Only

Toll-free: 1-888-852-8623
Web: www.elabscience.com

Tel: 1-832-243-6086
Email: techsupport@elabscience.com

Fax: 1-832-243-6017

Rev. V1.2

Background

Histones are basic nuclear proteins that are responsible for the nucleosome structure of the chromosomal fiber in eukaryotes. Two molecules of each of the four core histones (H2A, H2B, H3, and H4) form an octamer, around which approximately 146 bp of DNA is wrapped in repeating units, called nucleosomes. The linker histone, H1, interacts with linker DNA between nucleosomes and functions in the compaction of chromatin into higher order structures. This gene is intronless and encodes a replication-dependent histone that is a member of the histone H4 family. Transcripts from this gene lack polyA tails but instead contain a palindromic termination element. This gene is found in the histone microcluster on chromosome 6p21.33.

For Research Use Only

Toll-free: 1-888-852-8623
Web: www.elabscience.com

Tel: 1-832-243-6086
Email: techsupport@elabscience.com

Fax: 1-832-243-6017

Rev. V1.2