

Recombinant Podoplanin Monoclonal Antibody

catalog number: **AN300737L**

Note: Centrifuge before opening to ensure complete recovery of vial contents.

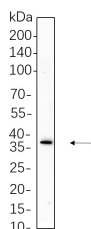
Description

Reactivity	Human;Mouse;Rat
Immunogen	Recombinant Human Podoplanin protein
Host	Rabbit
Isotype	IgG, κ
Clone	6H10
Purification	Protein A
Buffer	PBS, 50% glycerol, 0.05% Proclin 300, 0.05% protein protectant.

Applications Recommended Dilution

WB	1:1000-1:5000
-----------	---------------

Data



Western Blot with Recombinant Podoplanin Monoclonal Antibody at dilution of 1:1000 dilution. Lane A: Mouse brain cell lysate.

Observed-MW:36 kDa

Calculated-MW:17 kDa

Preparation & Storage

Storage	Store at -20°C Valid for 12 months. Avoid freeze / thaw cycles.
Shipping	Ice bag

Background

This gene encodes a type-I integral membrane glycoprotein with diverse distribution in human tissues. The physiological function of this protein may be related to its mucin-type character. The homologous protein in other species has been described as a differentiation antigen and influenza-virus receptor. The specific function of this protein has not been determined but it has been proposed as a marker of lung injury. Alternatively spliced transcript variants encoding different isoforms have been identified.

For Research Use Only