

## Recombinant Phospho-mTOR (Ser2448) Monoclonal Antibody

catalog number: **AN300143L**

**Note:** Centrifuge before opening to ensure complete recovery of vial contents.

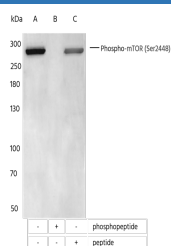
### Description

<b>Reactivity</b>	Human
<b>Immunogen</b>	A synthetic peptide corresponding to the residues around Ser2448 of Human Phospho-mTOR
<b>Host</b>	Rabbit
<b>Isotype</b>	IgG
<b>Clone</b>	4B9
<b>Purification</b>	Protein A
<b>Buffer</b>	10 mM sodium HEPES, 150 mM NaCl, 100 µg/mL protein protectant, 50% glycerol, pH 7.5

### Applications Recommended Dilution

<b>WB</b>	1:2000-1:20000
-----------	----------------

### Data



Western blot analysis of extracts from serum-starved HEK-293 treated without peptide (line A) or antigen-specific phosphopeptide (line B) or antigen-specific peptide (line C) using Phospho-mTOR (Ser2448) Monoclonal Antibody at 1:5000 dilution.

**Observed-MW:288 kDa**

**Calculated-MW:280 kDa**

### Preparation & Storage

<b>Storage</b>	This antibody can be stored at 2°C-8°C for one month without detectable loss of activity. Antibody products are stable for twelve months from date of receipt when stored at -20°C to -80°C. Preservative-Free. Avoid repeated freeze-thaw cycles.
<b>Shipping</b>	Ice bag

### Background

The protein encoded by this gene belongs to a family of phosphatidylinositol kinase-related kinases. These kinases mediate cellular responses to stresses such as DNA damage and nutrient deprivation. This protein acts as the target for the cell-cycle arrest and immunosuppressive effects of the FKBP12-rapamycin complex. The ANGPTL7 gene is located in an intron of this gene.

### For Research Use Only