

Recombinant CD8 alpha/CD8A Monoclonal Antibody

catalog number: **AN300513P**

Note: Centrifuge before opening to ensure complete recovery of vial contents.

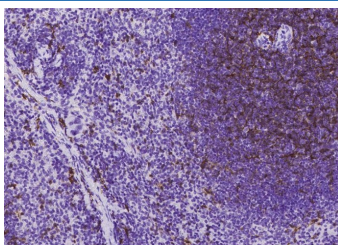
Description

Reactivity	Mouse
Immunogen	Recombinant Mouse CD8 alpha/CD8A Protein
Host	Rabbit
Isotype	IgG
Clone	9C8
Purification	Protein A
Buffer	0.2 µm filtered solution in PBS

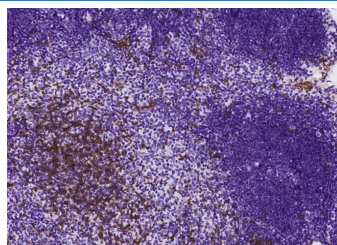
Applications Recommended Dilution

IHC-P	1:100-1:500
--------------	-------------

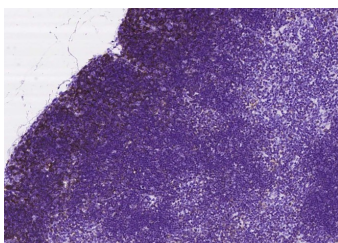
Data



Immunohistochemistry of paraffin-embedded mouse spleen using CD8 alpha/CD8A Monoclonal Antibody at dilution of 1:200.



Immunohistochemistry of paraffin-embedded mouse lymph node using CD8 alpha/CD8A Monoclonal Antibody at dilution of 1:300.



Immunohistochemistry of paraffin-embedded mouse thymus using CD8 alpha/CD8A Monoclonal Antibody at dilution of 1:300.

Preparation & Storage

Storage	This antibody can be stored at 2°C-8°C for one month without detectable loss of activity. Antibody products are stable for twelve months from date of receipt when stored at -20°C to -80°C. Preservative-Free. Avoid repeated freeze-thaw cycles.
Shipping	Ice bag

Background

CD8, also known as Ly-2, is a heterodimeric glycoprotein consisting of an alpha and beta chain. It is expressed on cytolytic T cells and functions in conjunction with the T cell receptor in the recognition of MHC/peptide complexes. Mouse CD8 (containing an alpha /Ly-2 or alpha /Lyt-2 chain) is an antigen co-receptor on the T cell surface which interacts with MHC I molecules on antigen presenting cells.

For Research Use Only