

Elab Bright™ Violet 421 Anti-Mouse Ly6A/E(Sca-1) Antibody[D7]

Catalog Number: E-AB-F1191Q2

Note: Centrifuge before opening to ensure complete recovery of vial contents.

Description

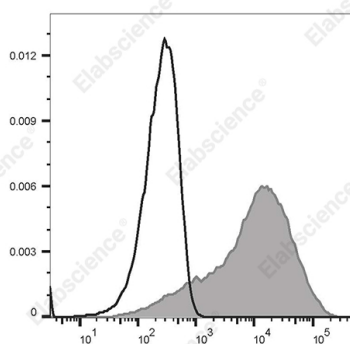
| | |
|-------------------------|--|
| Reactivity | Mouse |
| Host | Rat |
| Isotype | Rat IgG2a, κ |
| Clone No. | D7 |
| Isotype Control | Elab Bright™ Violet 421 Rat IgG2a, κ Isotype Control[R35-95] [Product AN00822Q2] |
| Conjugation | Elab Bright™ Violet 421 |
| Conjugation Information | Elab Bright Violet 421 is designed to be excited by the violet laser (405 nm) and detected using an optical filter centered near 421 nm (e.g., a 450/50 nm bandpass filter). |
| Storage Buffer | Phosphate buffered solution, pH 7.2, containing 0.09% sodium azide and 1% BSA. |

Applications

Recommended usage

| | |
|-----|---|
| FCM | Each lot of this antibody is quality control tested by flow cytometric analysis. The amount of the reagent is suggested to be used 5 μL of antibody per test (million cells in 100 μL staining volume or per 100 μL of whole blood). Please check your vial before the experiment. Since applications vary, the appropriate dilutions must be determined for individual use. |
|-----|---|

Data



Staining of C57BL/6 murine splenocytes cells with Elab Bright Violet 421 Anti-Mouse Ly-6A/E Antibody[D7] (filled gray histogram) or Elab Bright Violet 421 Rat IgG2a, κ Isotype Control (empty black histogram). Total viable cells were used for analysis.

Preparation & Storage

| | |
|----------|---|
| Storage | Keep as concentrated solution. This product can be stored at 2-8°C for 12 months. Please protected from prolonged exposure to light and do not freeze. |
| Shipping | Ice bag |

Antigen Information

| | |
|-----------------|------------------------------------|
| Alternate Names | Ly6a;Ly6;Ly-6A.2/Ly-6E.1;SCA-1;TAP |
| Uniprot ID | P05533 |
| Gene ID | 110454 |

For Research Use Only

Background

Ly-6A/E, also known as Sca-1, is an 18 kD member of the Ly-6 multigene family. Ly6A/E is a glycosylphosphatidylinositol (GPI)-linked protein expressed on hematopoietic stem cells. In mice expressing the Ly-6.2 haplotype (e.g., AKR, C57BL, C57BR, DBA/2, SJL, SWR, and 129), Ly-6A/E is also expressed on peripheral B lymphocytes and thymic and peripheral T lymphocytes. Strains expressing the Ly-6.1 haplotype (e.g., BALB/c, CBA, C3H/He, DBA/1, and NZB) have low Ly-6A/E expression on resting peripheral lymphocytes. The expression of Ly-6A/E on lymphocytes is upregulated upon activation from both Ly6.1 and Ly6.2 haplotype mice. Ly-6A/E is thought to be involved in the regulation of both T and B cell responses.