

## HIGD1A Polyclonal Antibody

catalog number: **AN100007P**

**Note:** Centrifuge before opening to ensure complete recovery of vial contents.

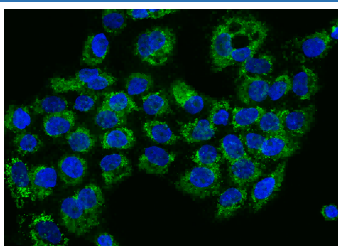
### Description

<b>Reactivity</b>	Human
<b>Immunogen</b>	E. coli-derived Human HIGD1A fragment
<b>Host</b>	Rabbit
<b>Isotype</b>	IgG
<b>Purification</b>	Protein A & Antigen Affinity
<b>Buffer</b>	PBS, pH7.0 with 0.03% Proclin300

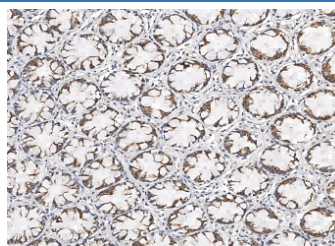
### Applications

Applications	Recommended Dilution
<b>WB</b>	1:500-1:2000
<b>IHC-P</b>	1:50-1:200
<b>ICC/IF</b>	1:50-1:200
<b>IP</b>	1-5 µL/mg of lysate

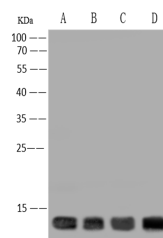
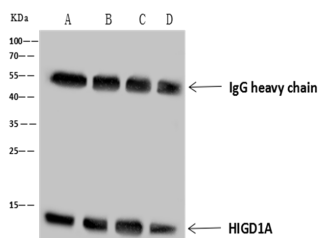
### Data



Immunofluorescence analysis of HIGD1A in A431 cells. Cells were fixed with 4% PFA, permeabilized with 0.3% Triton X-100 in PBS, blocked with 10% serum, and incubated with rabbit anti-Human HIGD1A polyclonal antibody (dilution ratio 1:100) at 4°C overnight. Then cells were stained with the Alexa Fluor®488-conjugated Goat Anti-rabbit IgG secondary antibody (green) and counterstained with DAPI for nuclear staining (blue). Positive staining was localized to Cytoplasm.



Immunohistochemistry of paraffin-embedded human rectum using HIGD1A Polyclonal Antibody at dilution of 1:100.



### For Research Use Only

Toll-free: 1-888-852-8623  
Web: [www.elabscience.com](http://www.elabscience.com)

Tel: 1-832-243-6086  
Email: [techsupport@elabscience.com](mailto:techsupport@elabscience.com)

Fax: 1-832-243-6017

Rev. V1.1

Immunoprecipitation analysis using 4 µL anti-HIGD1A rabbit polyclonal antibody and 60 µg of Immunomagnetic beads Protein A/G. Western blot was performed from the immunoprecipitate using HIGD1A rabbit polyclonal antibody at a dilution of 1:100. Lane A:0.5 mg A431 Whole Cell Lysate, Lane B:0.5 mg HeLa Whole Cell Lysate, Lane C:0.5 mg HepG2 Whole Cell Lysate, Lane D:0.5 mg 293 Whole Cell Lysate

**Observed-MW:12 kDa**

**Calculated-MW:12 kDa**

Western Blot with HIGD1A Polyclonal Antibody at dilution of 1:500. Lane A: A431 Whole Cell Lysate, Lane B: HeLa Whole Cell Lysate, Lane C: HepG2 Whole Cell Lysate, Lane D: 293 Whole Cell Lysate, Lysates/proteins at 30 µg per lane.

**Observed-MW:12 kDa**

**Calculated-MW:12 kDa**

## Preparation & Storage

### Storage

This antibody can be stored at 2°C-8°C for one month without detectable loss of activity. Antibody products are stable for twelve months from date of receipt when stored at -20°C to -80°C. Avoid repeated freeze-thaw cycles.

### Shipping

Ice bag

## Background

Proposed subunit of cytochrome c oxidase (COX, complex IV, which is the terminal component of the mitochondrial respiratory chain that catalyzes the reduction of oxygen to water. May play a role in the assembly of respiratory supercomplexes.