

Recombinant ALDOA Monoclonal Antibody

catalog number: **AN301431L**

Note: Centrifuge before opening to ensure complete recovery of vial contents.

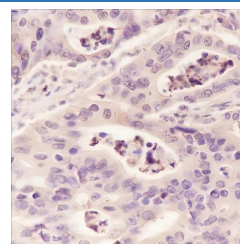
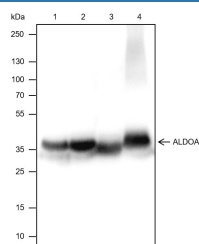
Description

Reactivity	Human;Rat;Mouse
Immunogen	Recombinant human ALDOA fragment
Host	Rabbit
Isotype	IgG, κ
Clone	A126
Purification	Protein A purified
Buffer	PBS, 50% glycerol, 0.05% Proclin 300, 0.05% protein protectant.

Applications Recommended Dilution

WB	1:500-1:1000
IHC	1:50-1:100
IF	1:50

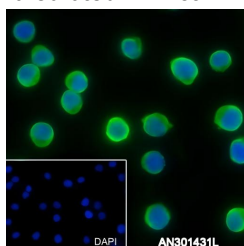
Data



Western Blot with ALDOA Monoclonal Antibody at dilution of 1:1000. Lane 1: MCF7, Lane 2: HepG2, Lane 3: Mouse kidney, Lane 4: Rat brain

Immunohistochemistry of paraffin-embedded Human colon cancer using ALDOA Monoclonal Antibody at dilution of 1:100.

Observed-MW:35 kDa
Calculated-MW:39 kDa



Immunofluorescent analysis of (4% Paraformaldehyde) fixed Jurkat cells using anti-ALDOA Monoclonal Antibody at dilution of 1:50.

Preparation & Storage

Storage	Store at -20°C Valid for 12 months. Avoid freeze / thaw cycles.
Shipping	Ice bag

Background

Plays a key role in glycolysis and gluconeogenesis. In addition, may also function as scaffolding protein.

For Research Use Only

Toll-free: 1-888-852-8623
Web: www.elabscience.com

Tel: 1-832-243-6086
Email: techsupport@elabscience.com

Fax: 1-832-243-6017

Rev. V1.0