

Recombinant Phospho-Chk1 (Ser345) Monoclonal Antibody

catalog number: **AN300370L**

Note: Centrifuge before opening to ensure complete recovery of vial contents.

Description

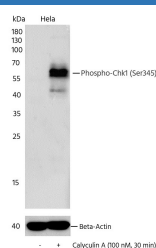
Reactivity	Human
Immunogen	A synthetic peptide corresponding to residues around
Host	Rabbit
Isotype	IgG
Clone	11A8
Purification	Protein A
Buffer	10 mM sodium HEPES, 150 mM NaCl, 100 µg/mL protein protectant, 50% glycerol, pH 7.5

Applications

Recommended Dilution

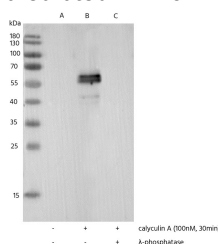
WB 1:2000-1:20000

Data



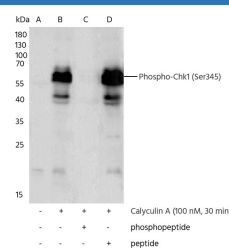
Western blot analysis of extracts from serum-starved HeLa, untreated (-) or treated with Calyculin A (100 nM, 30 min; +), using Phospho-Chk1 (Ser345) rabbit monoclonal Antibody at 1:5000 dilution. (upper) or Anti-beta-Actin Antibody Loading Control Antibody, Rabbit MAb (Chimeric) at 1:50000 dilution(lower).

Observed-MW:56 kDa
Calculated-MW:54 kDa



Western blot analysis of extracts from serum-starved HeLa, untreated (line A); treated with calyculin A (100 nM, 30min; +) (line B); treated with calyculin A and λ-phosphatase (line C) using Phospho-Chk1 (Ser345) rabbit monoclonal Antibody at 1:1000 dilution.

Observed-MW:56 kDa
Calculated-MW:54 kDa



Western blot analysis of extracts from serum-starved HeLa, untreated (line A); treated with Calyculin A (100 nM, 30 min), without peptide (line B) or antigen-specific phosphopeptide (line C) or antigen-specific peptide (line D) using Phospho-Chk1 (Ser345) rabbit monoclonal Antibody at 1:1000 dilution.

Observed-MW:56 kDa
Calculated-MW:54 kDa

Preparation & Storage

For Research Use Only

Toll-free: 1-888-852-8623
Web: www.elabscience.com

Tel: 1-832-243-6086
Email: techsupport@elabscience.com

Fax: 1-832-243-6017

Rev. V1.0

Storage

This antibody can be stored at 2°C-8°C for one month without detectable loss of activity. Antibody products are stable for twelve months from date of receipt when stored at -20°C to -80°C. Preservative-Free. Avoid repeated freeze-thaw cycles.

Shipping

Ice bag

Background

The protein encoded by this gene belongs to the Ser/Thr protein kinase family. It is required for checkpoint mediated cell cycle arrest in response to DNA damage or the presence of unreplicated DNA. This protein acts to integrate signals from ATM and ATR, two cell cycle proteins involved in DNA damage responses, that also associate with chromatin in meiotic prophase I. Phosphorylation of CDC25A protein phosphatase by this protein is required for cells to delay cell cycle progression in response to double-strand DNA breaks. Several alternatively spliced transcript variants have been found for this gene.

For Research Use Only

Toll-free: 1-888-852-8623
Web: www.elabscience.com

Tel: 1-832-243-6086
Email: techsupport@elabscience.com

Fax: 1-832-243-6017

Rev. V1.0