

## PE/Cyanine 7 Anti-Human CD3 Antibody[HIT3b]

Catalog Number: GFH00644H

**Note:** Centrifuge before opening to ensure complete recovery of vial contents.

### Description

Reactivity	Human
Host	Mouse
Isotype	Mouse IgG1
Clone No.	HIT3b
Isotype Control	PE/Cyanine7 Mouse IgG1, $\kappa$ Isotype Control[MOPC-21] [Product GFH09792H]
Conjugation	PE/Cyanine 7
Conjugation Information	PE/Cyanine7 is designed to be excited by the Blue (488 nm), Green (532 nm) and yellow-green (561 nm) lasers and detected using an optical filter centered near 775 nm (e.g., a 780/60 nm bandpass filter).
Storage Buffer	Phosphate buffered solution, pH 7.2, containing 0.09% sodium azide.

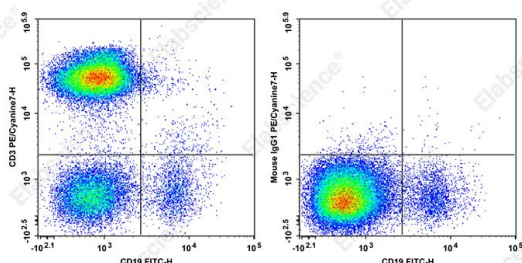
### Applications

FCM

### Recommended usage

Each lot of this antibody is quality control tested by flow cytometric analysis. **The amount of the reagent is suggested to be used 5  $\mu$ L of antibody per test (million cells in 100  $\mu$ L staining volume or per 100  $\mu$ L of whole blood).** Please check your vial before the experiment. Since applications vary, the appropriate dilutions must be determined for individual use.

### Data



Staining of normal human peripheral blood cells with PE/Cyanine7 Anti-Human CD3 Antibody[HIT3b] and FITC Anti-Human CD19 Antibody[CB19] (left) or PE/Cyanine7 Mouse IgG1,  $\kappa$  Isotype Control (right). Cells in the lymphocytes gate were used for analysis.

### Preparation & Storage

Storage	Keep as concentrated solution. This product can be stored at 2-8°C for 12 months. Please protected from prolonged exposure to light and do not freeze.
Shipping	Ice bag

### Antigen Information

Alternate Names	T-cell surface glycoprotein CD3 epsilon chain;CD3E;T-cell surface antigen T3/Leu-4 epsilon chain;CD3e;CD3E;T3E;CD3抗体;CD3流式抗体;人CD3;人CD3抗体;人CD3流式抗体;GFH00644
-----------------	--

### For Research Use Only

**Uniprot ID**

P07766

**Gene ID**

916

**Background**

CD3ε is a 20 kD chain of the CD3/T-cell receptor (TCR) complex which is composed of two CD3ε, one CD3γ, one CD3δ, one CD3ζ (CD247), and a T-cell receptor (α/β or γ/δ) heterodimer. It is found on all mature T lymphocytes, NK-T cells, and some thymocytes.

CD3, also known as T3, is a member of the immunoglobulin superfamily that plays a role in antigen recognition, signal transduction, and T cell activation.