

## Recombinant SMARCD1 Monoclonal Antibody

catalog number: AN301799L

**Note:** Centrifuge before opening to ensure complete recovery of vial contents.

### Description

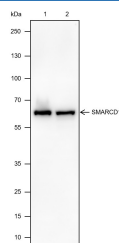
<b>Reactivity</b>	Human;Mouse
<b>Immunogen</b>	Recombinant human SMARCD1 fragment
<b>Host</b>	Rabbit
<b>Isotype</b>	IgG, κ
<b>Clone</b>	A511
<b>Purification</b>	Protein A purified
<b>Buffer</b>	PBS, 50% glycerol, 0.05% Proclin 300, 0.05% protein protectant.

### Applications

### Recommended Dilution

<b>WB</b>	1:500-1:1000
-----------	--------------

### Data



Western Blot with SMARCD1 Monoclonal Antibody at dilution of 1:1000. Lane 1: Neuro-2a, Lane 2: Jurkat

**Observed-MW:58 kDa**

**Calculated-MW:58 kDa**

### Preparation & Storage

<b>Storage</b>	Store at -20°C Valid for 12 months. Avoid freeze / thaw cycles.
<b>Shipping</b>	Ice bag

### Background

SWI/SNF-related matrix-associated actin-dependent regulator of chromatin subfamily D member 1 (SMARCD1) is a protein that is encoded by the SMARCD1 gene in human. SMARCD1 involved in transcriptional activation and repression of select genes by chromatin remodeling (alteration of DNA- nucleosome topology). It is a component of SWI/SNF chromatin remodeling complexes that carry out key enzymatic activities, changing chromatin structure by altering DNA-histone contacts within a nucleosome in an ATP-dependent manner.

### For Research Use Only