

CD7 Monoclonal Antibody

catalog number: **AN200115P**

Note: Centrifuge before opening to ensure complete recovery of vial contents.

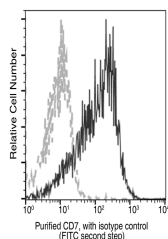
Description

Reactivity	Human
Immunogen	Human CD7 Plasmid
Host	Mouse
Isotype	IgG2b
Clone	9A8
Purification	Protein A
Buffer	0.2 µm filtered solution in PBS

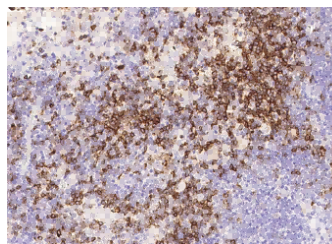
Applications

Applications	Recommended Dilution
WB	1:500-1:2000
FCM	1:25-1:100
IHC-P	1:30-1:100

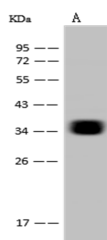
Data



Flow cytometric analysis of Human CD7 expression on human whole blood Lymphocytes. Cells were stained with purified anti-Human CD7, then a FITC-conjugated second step antibody. The fluorescence histograms were derived from gated events with the forward and side light-scatter characteristics of viable Lymphocytes.



Immunohistochemistry of paraffin-embedded human lymph node using CD7 Monoclonal Antibody at dilution of 1:60.



Western Blot with CD7 Monoclonal Antibody at dilution of 1:500. Lane A: Jurkat Whole Cell Lysate, Lysates/proteins at 30 µg per lane.

Observed-MW:37 kDa

Calculated-MW:25 kDa

Preparation & Storage

For Research Use Only

Toll-free: 1-888-852-8623
Web: www.elabscience.com

Tel: 1-832-243-6086
Email: techsupport@elabscience.com

Fax: 1-832-243-6017

Rev. V1.1

Storage

This antibody can be stored at 2°C-8°C for one month without detectable loss of activity. Antibody products are stable for twelve months from date of receipt when stored at -20°C to -80°C. Preservative-Free. Avoid repeated freeze-thaw cycles.

Shipping

Ice bag

Background

This gene encodes a transmembrane protein which is a member of the immunoglobulin superfamily. This protein is found on thymocytes and mature T cells. It plays an essential role in T-cell interactions and also in T-cell/B-cell interaction during early lymphoid development.