

Recombinant Human Butyrophilin 3A2/BTN3A2 Protein (His Tag)

Catalog Number: PKSH032133

Note: Centrifuge before opening to ensure complete recovery of vial contents.

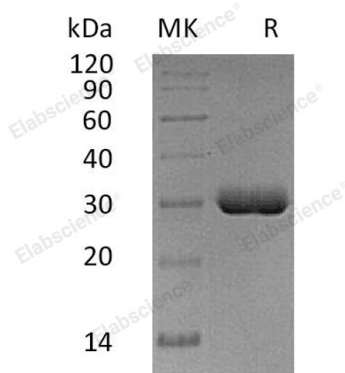
Description

Species	Human
Source	HEK293 Cells-derived Human Butyrophilin 3A2;BTN3A2 protein Gln30-Trp248, with an C-terminal His
Calculated MW	24.6 kDa
Observed MW	29 kDa
Accession	P78410
Bio-activity	Not validated for activity

Properties

Purity	> 95 % as determined by reducing SDS-PAGE.
Endotoxin	< 1.0 EU per µg of the protein as determined by the LAL method.
Storage	Generally, lyophilized proteins are stable for up to 12 months when stored at -20 to -80 °C. Reconstituted protein solution can be stored at 4-8°C for 2-7 days. Aliquots of reconstituted samples are stable at < -20°C for 3 months.
Shipping	This product is provided as lyophilized powder which is shipped with ice packs.
Formulation	Lyophilized from a 0.2 µm filtered solution of 20mM PB, 150mM NaCl, pH7.4. Normally 5% - 8% trehalose, mannitol and 0.01% Tween 80 are added as protectants before lyophilization.
	Please refer to the specific buffer information in the printed manual.
Reconstitution	Please refer to the printed manual for detailed information.

Data



> 95 % as determined by reducing SDS-PAGE.

Background

Butyrophilin subfamily 3 member A2, also known as BT3.2, BTF3, BTF4 and BTN3A2, is a single-pass type I membrane protein. It is a member of the butyrophilin (BTN) family and the immunoglobulin (Ig) superfamily. Mature human BTN3A2 is a 305 amino acid (aa) glycoprotein. It contains a 219 aa extracellular region with one V-type Ig-like domain, and a 65 aa cytoplasmic tail. The cytoplasmic region undergoes phosphorylation on two serines. There are three potential splice forms. BTN3A2 is postulated to be expressed on immune-related cells, as it has a structural similarity to MHC and CD80/CD86 molecules. It plays a role in T-cell responses in the adaptive immune response and inhibits the release of IFNG from activated T-cells.

For Research Use Only