

GSK3 alpha/beta Polyclonal Antibody

Catalog Number: E-AB-31628 1 Publications



Note: Centrifuge before opening to ensure complete recovery of vial contents.

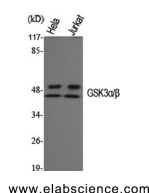
Description

Reactivity	Human, Mouse, Rat
Immunogen	Synthesized peptide derived from human GSK3 α/β around the non-phosphorylation site of Tyr279/216.
Host	Rabbit
Isotype	IgG
Purification	Affinity purification
Conjugation	Unconjugated
Formulation	PBS with 0.02% sodium azide, 0.5% protective protein and 50% glycerol, pH7.4

Applications Recommended Dilution

WB	1:500-1:2000
IHC	1:100-1:300
ELISA	1:20000

Data



Western Blot analysis of HeLa, Jurkat cells using GSK3 alpha/beta Polyclonal Antibody at dilution of 1:1000.

Observed Mw: 51,46kDa

Calculated Mw: 51kDa

Preparation & Storage

Storage Store at -20°C. Avoid freeze / thaw cycles.

Background

Glycogen synthase kinase-3 (GSK-3) was initially identified as an enzyme that regulates glycogen synthesis in response to insulin. GSK-3 is a ubiquitously expressed serine/threonine protein kinase that phosphorylates and inactivates glycogen synthase. GSK-3 is a critical downstream element of the PI3 kinase/Akt cell survival pathway whose activity can be inhibited by Akt-mediated phosphorylation at Ser21 of GSK-3 α and Ser9 of GSK-3 β . GSK-3 has been implicated in the regulation of cell fate in Dictyostelium and is a component of the Wnt signaling pathway required for Drosophila, Xenopus and mammalian development. GSK-3 has been shown to regulate cyclin D1 proteolysis and subcellular localization.

For Research Use Only

A Reliable Research Partner in Life Science and Medicine

Toll-free: 1-888-852-8623

Web: www.elabscience.com

Tel: 1-832-243-6086

Email: techsupport@elabscience.com

Fax: 1-832-243-6017