

S100A9 Polyclonal Antibody

catalog number: E-AB-40341

Note: Centrifuge before opening to ensure complete recovery of vial contents.

Description

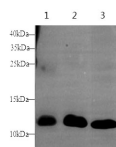
Reactivity	Mouse;Rat
Immunogen	Recombinant Mouse S100A9 protein expressed by E.coli
Host	Rabbit
Isotype	IgG
Purification	Antigen Affinity Purification
Conjugation	Unconjugated
Buffer	PBS with 0.05% Proclin300, 1% protective protein and 50% glycerol, pH7.4

Applications

Recommended Dilution

WB	1:250-1:500
IHC	1:100-1:300

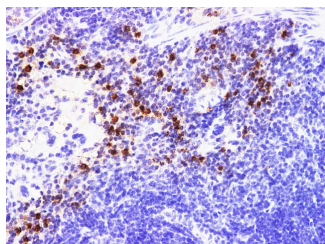
Data



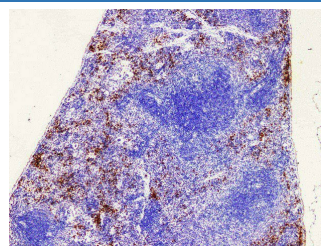
Western blot with S100A9 Polyclonal antibody at dilution of 1:1000.lane 1:Mouse lung, lane 2:Rat spleen, lane 3:Rat lung

Observed-MW:14 kDa

Calculated-MW:13 kDa



Immunohistochemistry of paraffin-embedded Mouse spleen using S100A9 Polyclonal Antibody at dilution of 1:200(400×)



Immunohistochemistry of paraffin-embedded Mouse spleen using S100A9 Polyclonal Antibody at dilution of 1:200(100×)

Preparation & Storage

Storage	Store at -20°C Valid for 12 months. Avoid freeze / thaw cycles.
Shipping	The product is shipped with ice pack, upon receipt, store it immediately at the temperature recommended.

Background

For Research Use Only

he protein encoded by this gene is a member of the S100 family of proteins containing 2 EF-hand calcium-binding motifs. S100 proteins are localized in the cytoplasm and/or nucleus of a wide range of cells, and involved in the regulation of a number of cellular processes such as cell cycle progression and differentiation. S100 genes include at least 13 members which are located as a cluster on chromosome 1q21.