

## Recombinant Mouse SerpinE2/SERPINE2 Protein (His Tag)

**Catalog Number:** PKSM041335

**Note:** Centrifuge before opening to ensure complete recovery of vial contents.

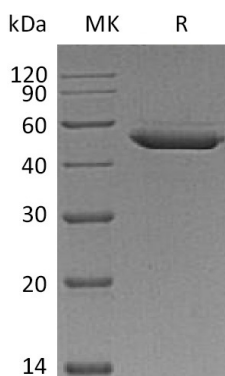
### Description

<b>Species</b>	Mouse
<b>Source</b>	HEK293 Cells-derived Mouse SerpinE2/SERPINE2 protein Ser20-Pro397, with an C-terminal His
<b>Calculated MW</b>	43.2 kDa
<b>Observed MW</b>	50-55 kDa
<b>Accession</b>	Q07235
<b>Bio-activity</b>	Not validated for activity

### Properties

<b>Purity</b>	> 95 % as determined by reducing SDS-PAGE.
<b>Concentration</b>	Subject to label value.
<b>Endotoxin</b>	< 1.0 EU per µg of the protein as determined by the LAL method.
<b>Storage</b>	Store at < -20°C, stable for 6 months. Please minimize freeze-thaw cycles.
<b>Shipping</b>	This product is provided as liquid. It is shipped at frozen temperature with blue ice/ gel packs. Upon receipt, store it immediately at < - 20°C.
<b>Formulation</b>	Supplied as a 0.2 µm filtered solution of 20mM Sodium Acetate, 150 mM NaCl, 5% Trehalose, 5% Mannitol, 0.02% Tween 80, 1mM EDTA, pH 4.0.

### Data



### Background

Serpin E2 is a member of the Serpin superfamily of the serine protease inhibitors. Serpin E2 is a potent inhibitor of thrombin, plasmin and plasminogen activators. It is differentially expressed during neuronal differentiation and is able to transform human embryonic kidney cells into neuron-like cells. Its over-expression in mice leads to progressive neuronal and motor dysfunction in these animals. It is also over-expressed in the majority of pancreatic carcinoma as well as gastric and colorectal cancer samples whereas it is weakly expressed in all normal pancreas and chronic pancreatitis tissue samples. It plays an important role in controlling male fertility because its knockout male mice show a marked impairment in fertility from the onset of sexual maturity and its abnormal expression is found in the semen of men with seminal dysfunction.

### For Research Use Only

Toll-free: 1-888-852-8623  
Web: [www.elabscience.com](http://www.elabscience.com)

Tel: 1-832-243-6086  
Email: [techsupport@elabscience.com](mailto:techsupport@elabscience.com)

Fax: 1-832-243-6017