

## Recombinant Human BMP2 protein (His Tag)

Catalog Number: PDEH100860

**Note:** Centrifuge before opening to ensure complete recovery of vial contents.

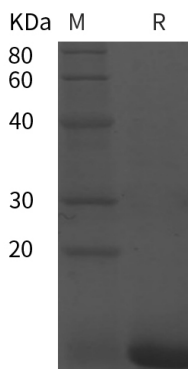
### Description

<b>Species</b>	Human
<b>Source</b>	E.coli-derived Human BMP2 protein Gln283-Arg396, with an N-terminal His
<b>Calculated MW</b>	12.4 kDa
<b>Observed MW</b>	12 kDa
<b>Accession</b>	P12643
<b>Bio-activity</b>	Not validated for activity

### Properties

<b>Purity</b>	> 95% as determined by reducing SDS-PAGE.
<b>Endotoxin</b>	< 10 EU/mg of the protein as determined by the LAL method
<b>Storage</b>	Generally, lyophilized proteins are stable for up to 12 months when stored at -20 to -80 °C. Reconstituted protein solution can be stored at 4-8°C for 2-7 days. Aliquots of reconstituted samples are stable at < -20°C for 3 months.
<b>Shipping</b>	This product is provided as lyophilized powder which is shipped with ice packs.
<b>Formulation</b>	Lyophilized from a 0.2 µm filtered solution in PBS with 5% Trehalose and 5% Mannitol.
<b>Reconstitution</b>	It is recommended that sterile water be added to the vial to prepare a stock solution of 0.5 mg/mL. Concentration is measured by UV-Vis.

### Data



> 95 % as determined by reducing SDS-PAGE.

### Background

BMP-2 protein, like other bone morphogenetic proteins, plays an important role in the development of bone and cartilage. BMP-2 protein is involved in the hedgehog pathway, TGF beta signaling pathway, and cytokine-cytokine receptor interaction. BMP-2 and BMP-7 are osteogenic BMPs that have been demonstrated to potently induce osteoblast differentiation in a variety of cell types. BMP-2, BMP-4 and BMP-7 are known to be of major importance in bone formation and repair. In cancerous tissues BMP-2 protein may play an important role in the progression of glioma.