

# ALS2CR11 Polyclonal Antibody

catalog number: E-AB-10786

**Note:** Centrifuge before opening to ensure complete recovery of vial contents.

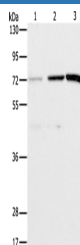
## Description

<b>Reactivity</b>	Human;Mouse
<b>Immunogen</b>	Recombinant protein of human ALS2CR11
<b>Host</b>	Rabbit
<b>Isotype</b>	IgG
<b>Purification</b>	Affinity purification
<b>Conjugation</b>	Unconjugated
<b>buffer</b>	Phosphate buffered solution, pH 7.4, containing 0.05% stabilizer and 50% glycerol.

## Applications

Applications	Recommended Dilution
WB	1:200-1:1000

## Data



Western Blot analysis of Hela and SKOV3 cell, Mouse liver tissue using ALS2CR11 Polyclonal Antibody at dilution of 1:500

Calculated-MV:71 kDa

## Preparation & Storage

<b>Storage</b>	Store at -20°C Valid for 12 months. Avoid freeze / thaw cycles.
<b>Shipping</b>	The product is shipped with ice pack,upon receipt,store it immediately at the temperature recommended.

## Background

This gene has highly expression in digestive system component and liver, biliary system. It may have four isoforms that produced by alternative splicing. Transcription profiling of human mesenchymal stem cells transformed with lentiviral vectors of TERT, E6, SV40 and RAS.

## For Research Use Only