

CDK4 Polyclonal Antibody

catalog number: E-AB-70100

Note: Centrifuge before opening to ensure complete recovery of vial contents.

Description

Reactivity	Human;Rat
Immunogen	KLH conjugated Synthetic peptide corresponding to Mouse CDK4
Host	Rabbit
Isotype	IgG
Purification	Affinity purification
Conjugation	Unconjugated
Buffer	Phosphate buffered solution, pH 7.4, containing 0.05% stabilizer, 1% protein protectant and 50% glycerol.

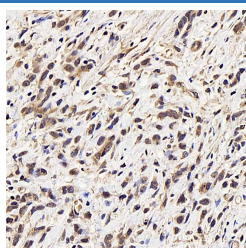
Applications

Recommended Dilution

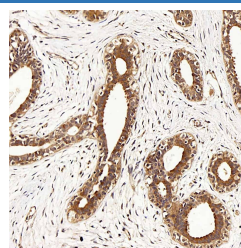
IHC

1:100

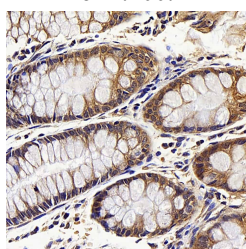
Data



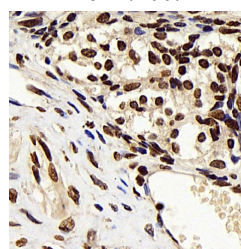
Immunohistochemistry analysis of paraffin-embedded human stomach cancer using CDK4 Polyclonal Antibody at dilution of 1:100.



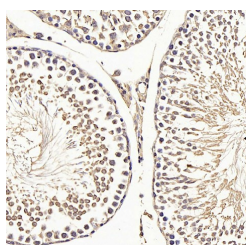
Immunohistochemistry analysis of paraffin-embedded human breast using CDK4 Polyclonal Antibody at dilution of 1:100.



Immunohistochemistry analysis of paraffin-embedded human colon using CDK4 Polyclonal Antibody at dilution of 1:100.



Immunohistochemistry analysis of paraffin-embedded rat ovary using CDK4 Polyclonal Antibody at dilution of 1:100.



Immunohistochemistry analysis of paraffin-embedded rat testis using CDK4 Polyclonal Antibody at dilution of 1:100.

Preparation & Storage

Storage

Store at -20°C Valid for 12 months. Avoid freeze / thaw cycles.

For Research Use Only

Tel: 400-999-2100

Web: www.elabscience.cn

Email: techsupport@elabscience.cn

Rev. V1.8

Shipping

The product is shipped with ice pack, upon receipt, store it immediately at the temperature recommended.

Background

The protein encoded by this gene is a member of the Ser/Thr protein kinase family. This protein is highly similar to the gene products of *S. cerevisiae* cdc28 and *S. pombe* cdc2. It is a catalytic subunit of the protein kinase complex that is important for cell cycle G1 phase progression. The activity of this kinase is restricted to the G1-S phase, which is controlled by the regulatory subunits D-type cyclins and CDK inhibitor p16(INK4a). This kinase was shown to be responsible for the phosphorylation of retinoblastoma gene product (Rb). Mutations in this gene as well as in its related proteins including D-type cyclins, p16(INK4a) and Rb were all found to be associated with tumorigenesis of a variety of cancers. Multiple polyadenylation sites of this gene have been reported.