

CAV1 Polyclonal Antibody

catalog number: **E-AB-70344**

Note: Centrifuge before opening to ensure complete recovery of vial contents.

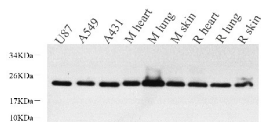
Description

Reactivity	Human;Mouse;Rat
Immunogen	KLH conjugated Synthetic peptide corresponding to Mouse Caveolin-1
Host	Rabbit
Isotype	IgG
Purification	Affinity purification
Buffer	Phosphate buffered solution, pH 7.4, containing 0.05% stabilizer, 1% protein protectant and 50% glycerol.

Applications

Applications	Recommended Dilution
WB	1:500-1:2000
IHC	1:500-1:1000

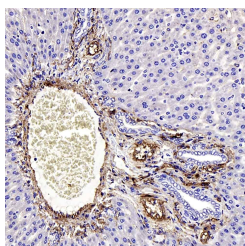
Data



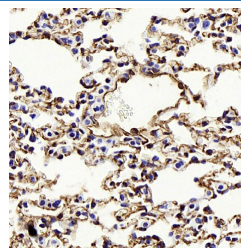
Western Blot analysis of various samples using CAV1 Polyclonal Antibody at dilution of 1:800.

Observed-MW:20 kDa

Calculated-MW:20 kDa



Immunohistochemistry analysis of paraffin-embedded rat liver using CAV1 Polyclonal Antibody at dilution of 1:1000.



Immunohistochemistry analysis of paraffin-embedded mouse lung using CAV1 Polyclonal Antibody at dilution of 1:1000.

Preparation & Storage

Storage	Store at -20°C Valid for 12 months. Avoid freeze / thaw cycles.
Shipping	The product is shipped with ice pack, upon receipt, store it immediately at the temperature recommended.

Background

For Research Use Only

Caveolin-1 (CAV1), a multifunctional protein, is the main constituent molecule of caveolae and represents a scaffolding molecule for several signaling molecules including epidermal growth factor receptor. Several studies have implicated that a reduced expression of CAV1 was found in cancers including head and neck carcinoma. However, other studies recognize CAV1 as a tumor promoter because CAV1 is overexpressed in various kinds of cancers, especially in oral cancer. Recent study also shows that CAV1 is involved in gastric cancer.

For Research Use Only

Toll-free: 1-888-852-8623
Web: www.elabscience.com

Tel: 1-832-243-6086
Email: techsupport@elabscience.com

Fax: 1-832-243-6017

Rev. V1.7