

RPS12 Polyclonal Antibody

Catalog Number: E-AB-52687



Note: Centrifuge before opening to ensure complete recovery of vial contents.

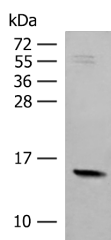
Description

Reactivity	Human, Mouse, Rat
Immunogen	Fusion protein of human RPS12
Host	Rabbit
Isotype	IgG
Purification	Antigen affinity purification
Conjugation	Unconjugated
Formulation	PBS with 0.05% NaN ₃ and 40% Glycerol, pH7.4

Applications Recommended Dilution

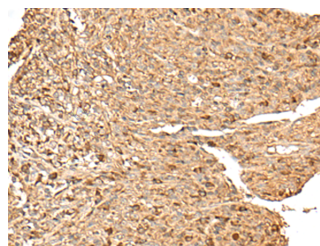
WB	1:500-1:2000
IHC	1:50-1:300
ELISA	1:5000-1:10000

Data



Western blot analysis of Mouse Pancreas tissue lysate using RPS12 Polyclonal Antibody at dilution of 1:500

Observed Mw: Refer to figures
Calculated Mw: 15 kDa



Immunohistochemistry of paraffin-embedded Human liver cancer tissue using RPS12 Polyclonal Antibody at dilution of 1:70 (x200)

Preparation & Storage

Storage Store at -20°C. Avoid freeze / thaw cycles.

Background

Ribosomes, the organelles that catalyze protein synthesis, consist of a small 40S subunit and a large 60S subunit. Together these subunits are composed of 4 RNA species and approximately 80 structurally distinct proteins. This gene encodes a ribosomal protein that is a component of the 40S subunit. The protein belongs to the S12E family of ribosomal proteins. It is located in the cytoplasm. Increased expression of this gene in colorectal cancers compared to matched normal colonic mucosa has been observed. As is typical for genes encoding ribosomal proteins, there are multiple processed pseudogenes of this gene dispersed through the genome.

For Research Use Only

A Reliable Research Partner in Life Science and Medicine

Toll-free: 1-888-852-8623

Web: www.elabscience.com

Tel: 1-832-243-6086

Email: techsupport@elabscience.com

Fax: 1-832-243-6017