

# RAB25 Polyclonal Antibody

Catalog Number: E-AB-11512



**Note:** Centrifuge before opening to ensure complete recovery of vial contents.

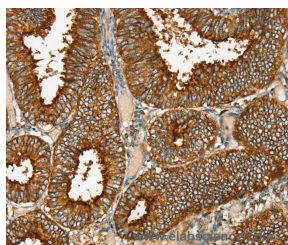
## Description

<b>Reactivity</b>	Human, Mouse
<b>Immunogen</b>	Recombinant protein of human RAB25
<b>Host</b>	Rabbit
<b>Isotype</b>	IgG
<b>Purification</b>	Affinity purification
<b>Conjugation</b>	Unconjugated
<b>Formulation</b>	PBS with 0.05% sodium azide and 50% glycerol, PH7.4

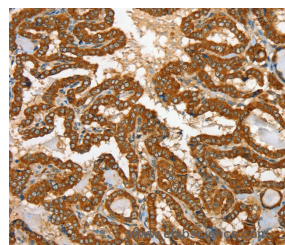
## Applications Recommended Dilution

<b>IHC</b>	1:40-1:150
------------	------------

## Data



Immunohistochemistry of paraffin-embedded Human cervical cancer tissue using RAB25 Polyclonal Antibody at dilution 1:35



Immunohistochemistry of paraffin-embedded Human thyroid cancer tissue using RAB25 Polyclonal Antibody at dilution 1:35

## Preparation & Storage

**Storage** Store at -20°C. Avoid freeze / thaw cycles.

## Background

RAB proteins, such as RAB25, are members of the RAS superfamily of small GTPases that are involved in membrane trafficking. Members of the RAB11 subfamily, including RAB25, control the return of internalized membrane-associated moieties to the cell surface.

## For Research Use Only

A Reliable Research Partner in Life Science and Medicine

Toll-free: 1-888-852-8623

Web: [www.elabscience.com](http://www.elabscience.com)

Tel: 1-832-243-6086

Email: [techsupport@elabscience.com](mailto:techsupport@elabscience.com)

Fax: 1-832-243-6017