

## Recombinant Human G-CSFR/CD114/CSF3R (C-Fc)

**Catalog Number:** PKSH033845

**Note:** Centrifuge before opening to ensure complete recovery of vial contents.

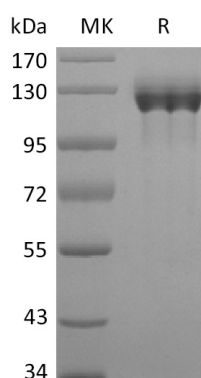
### Description

<b>Species</b>	Human
<b>Source</b>	HEK293 Cells-derived Human G-CSFR;CD114;CSF3R protein Glu25-His627, with an C-terminal Fc
<b>Calculated MW</b>	93.7 kDa
<b>Observed MW</b>	110-130 kDa
<b>Accession</b>	Q99062
<b>Bio-activity</b>	Not validated for activity

### Properties

<b>Purity</b>	> 95 % as determined by reducing SDS-PAGE.
<b>Endotoxin</b>	< 1.0 EU per µg of the protein as determined by the LAL method.
<b>Storage</b>	Generally, lyophilized proteins are stable for up to 12 months when stored at -20 to -80 °C. Reconstituted protein solution can be stored at 4-8°C for 2-7 days. Aliquots of reconstituted samples are stable at < -20°C for 3 months.
<b>Shipping</b>	This product is provided as lyophilized powder which is shipped with ice packs.
<b>Formulation</b>	Lyophilized from a 0.2 µm filtered solution of PBS, pH 7.4. Normally 5% - 8% trehalose, mannitol and 0.01% Tween 80 are added as protectants before lyophilization. Please refer to the specific buffer information in the printed manual.
<b>Reconstitution</b>	Please refer to the printed manual for detailed information.

### Data



### Background

Granulocyte Colony Stimulating Factor Receptor (G-CSFR), also known as CD114, the protein encoded by this gene is the receptor for colony stimulating factor 3, a cytokine that controls the production, differentiation, and function of granulocytes. The encoded protein, which is a member of the family of cytokine receptors, may also function in some cell surface adhesion or recognition processes. Mutations in the G-CSF receptor leading to carboxy-terminal truncation transduce hyperproliferative growth responses, and are implicated in the pathological progression of severe congenital neutropenia (SCN) to acute myelogenous leukemia (AML). Additionally, autocrine/paracrine stimulation of G-CSFR may be important in the biology of solid tumors, including metastasis.

### For Research Use Only