

## HSD17B13 Polyclonal Antibody

**catalog number: E-AB-15110**

**Note:** Centrifuge before opening to ensure complete recovery of vial contents.

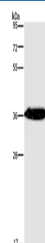
### Description

|                     |  |
|---------------------|--|
| <b>Reactivity</b>   | Human;Rat  |
| <b>Immunogen</b>    | Recombinant protein of human HSD17B13  |
| <b>Host</b>         | Rabbit   |
| <b>Isotype</b>      | IgG  |
| <b>Purification</b> | Affinity purification  |
| <b>Buffer</b>       | Phosphate buffered solution, pH 7.4, containing 0.05% stabilizer and 50% glycerol. |

### Applications

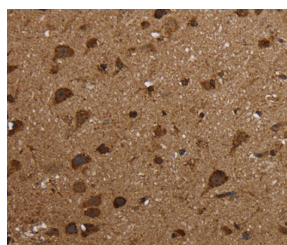
| Applications | Recommended Dilution |
|--------------|----------------------|
| <b>WB</b>    | 1:500-1:2000         |
| <b>IHC</b>   | 1:50-1:200           |

### Data

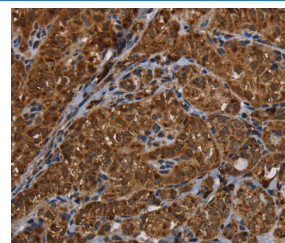


Western Blot analysis of Human fetal liver tissue using HSD17B13 Polyclonal Antibody at dilution of 1:350

**Calculated-MW:34 kDa**



Immunohistochemistry of paraffin-embedded Human brain using HSD17B13 Polyclonal Antibody at dilution of 1:30



Immunohistochemistry of paraffin-embedded Human thyroid cancer using HSD17B13 Polyclonal Antibody at dilution of 1:30

### Preparation & Storage

|                 |  |
|-----------------|--|
| <b>Storage</b>  | Store at -20°C Valid for 12 months. Avoid freeze / thaw cycles.  |
| <b>Shipping</b> | The product is shipped with ice pack, upon receipt, store it immediately at the temperature recommended. |

### Background

### For Research Use Only

17 $\beta$ -HSD13 (17 $\beta$  hydroxysteroid dehydrogenase type 13), also designated Short-chain dehydrogenase/reductase 9 (SCDR9), belongs to the 17 $\beta$ -HSD family of proteins, which regulate the availability of steroids within various tissues throughout the body. 17 $\beta$ -HSD13 is a 300 amino acid secreted protein that is highly expressed in liver and is also detected in ovary, bone marrow, kidney, brain, lung, skeletal muscle, bladder and testis. The gene encoding 17 $\beta$ -HSD13 maps to chromosome 4, which houses nearly 6% of the human genome and has the largest gene deserts (regions of the genome with no protein encoding genes) of all of the human chromosomes.

## For Research Use Only

Toll-free: 1-888-852-8623  
Web: [www.elabscience.com](http://www.elabscience.com)

Tel: 1-832-243-6086  
Email: [techsupport@elabscience.com](mailto:techsupport@elabscience.com)

Fax: 1-832-243-6017

Rev. V1.7