

# SLC8A3 Polyclonal Antibody

Catalog Number:E-AB-15997



**Note:** Centrifuge before opening to ensure complete recovery of vial contents.

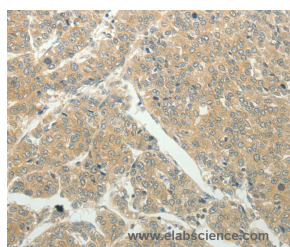
## Description

|                     |   |
|---------------------|---|
| <b>Reactivity</b>   | Human   |
| <b>Immunogen</b>    | Synthetic peptide of human SLC8A3                   |
| <b>Host</b>         | Rabbit  |
| <b>Isotype</b>      | IgG   |
| <b>Purification</b> | Affinity purification                               |
| <b>Conjugation</b>  | Unconjugated  |
| <b>Formulation</b>  | PBS with 0.05% sodium azide and 50% glycerol, PH7.4 |

## Applications Recommended Dilution

|            |            |
|------------|------------|
| <b>IHC</b> | 1:50-1:200 |
|------------|------------|

## Data



Immunohistochemistry of paraffin-embedded Human liver cancer tissue using SLC8A3 Polyclonal Antibody at dilution 1:50

## Preparation & Storage

|                |   |
|----------------|---|
| <b>Storage</b> | Store at -20°C. Avoid freeze / thaw cycles. |
|----------------|---|

## Background

This gene encodes a member of the sodium/calcium exchanger integral membrane protein family. Three mammalian isoforms in family 8 have been identified. Na<sup>+</sup>/Ca<sup>2+</sup> exchange proteins are involved in maintaining Ca<sup>2+</sup> homeostasis in a wide variety of cell types. The protein is regulated by intracellular calcium ions and is found in both the plasma membrane and intracellular organellar membranes, where exchange of Na<sup>+</sup> for Ca<sup>2+</sup> occurs in an electrogenic manner. Alternative splicing has been observed for this gene and multiple variants have been described.

## For Research Use Only

A Reliable Research Partner in Life Science and Medicine

Toll-free: 1-888-852-8623

Web: [www.elabscience.com](http://www.elabscience.com)

Tel: 1-832-243-6086

Email: [techsupport@elabscience.com](mailto:techsupport@elabscience.com)

Fax: 1-832-243-6017