

MRPS35 Polyclonal Antibody

catalog number: E-AB-52862

Note: Centrifuge before opening to ensure complete recovery of vial contents.

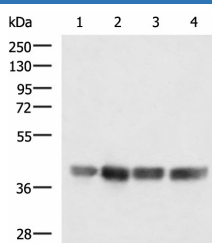
Description

Reactivity	Human
Immunogen	Fusion protein of human MRPS35
Host	Rabbit
Isotype	IgG
Purification	Antigen affinity purification
Conjugation	Unconjugated
buffer	Phosphate buffered solution, pH 7.4, containing 0.05% stabilizer and 50% glycerol.

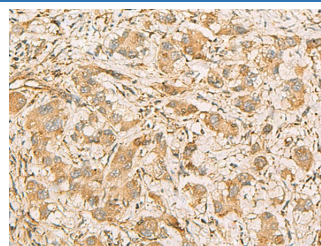
Applications

Applications	Recommended Dilution
WB	1:500-1:2000
IHC	1:50-1:200

Data



Western blot analysis of LOVO K562 Jurkat and Hela cell lysates using MRPS35 Polyclonal Antibody at dilution of 1:900



Immunohistochemistry of paraffin-embedded Human liver cancer tissue using MRPS35 Polyclonal Antibody at dilution of 1:60(×200)

Observed-MV:Refer to figures

Calculated-MV:37 kDa

Preparation & Storage

Storage	Store at -20°C Valid for 12 months. Avoid freeze / thaw cycles.
Shipping	The product is shipped with ice pack,upon receipt,store it immediately at the temperature recommended.

Background

Mammalian mitochondrial ribosomal proteins are encoded by nuclear genes and help in protein synthesis within the mitochondrion. Mitochondrial ribosomes (mitoribosomes) consist of a small 28S subunit and a large 39S subunit. They have an estimated 75% protein to rRNA composition compared to prokaryotic ribosomes, where this ratio is reversed. Another difference between mammalian mitoribosomes and prokaryotic ribosomes is that the latter contain a 5S rRNA. Among different species, the proteins comprising the mitoribosome differ greatly in sequence, and sometimes in biochemical properties, which prevents easy recognition by sequence homology. This gene encodes a 28S subunit protein that has had confusing nomenclature in the literature. Alternatively spliced transcript variants encoding different isoforms have been found for this gene. Pseudogenes corresponding to this gene are found on chromosomes 3p, 5q, and 10q. MRPS35 (Mitochondrial Ribosomal Protein S35) is a Protein Coding gene. Among its related pathways are Mitochondrial translation and Organelle biogenesis and maintenance. GO annotations related to this gene include poly(A) RNA binding and structural constituent of ribosome.

For Research Use Only