

Purified Anti-Human CD19 Antibody[SJ25C1]

catalog number: AN003340P

Note: Centrifuge before opening to ensure complete recovery of vial contents.

Description

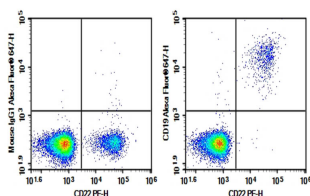
| | |
|---------------------|------------------------------------------|
| Reactivity | Human |
| Immunogen | Recombinant Human CD19 protein |
| Host | Mouse |
| Isotype | Mouse IgG1, κ |
| Clone | SJ25C1 |
| Purification | >98%, Protein A/G purified |
| Conjugation | Unconjugated |
| buffer | PBS, pH 7.2. Contains 0.05% proclin 300. |

Applications

Recommended Dilution

| | |
|------------|----------------------------------------------------------------------|
| FCM | 2 $\mu\text{g}/\text{mL}$ (1×10^5 - 5×10^5 cells) |
|------------|----------------------------------------------------------------------|

Data



Human peripheral blood lymphocytes were stained with 0.2 μg Purified Anti-Human CD19 Antibody[SJ25C1] (Right) and 0.2 μg Mouse IgG1, κ Isotype Control (Left), followed by Alexa Fluor[®] 647-conjugated Goat Anti-Mouse IgG Secondary Antibody, then anti-Human CD22 PE-conjugated Monoclonal Antibody.

Preparation & Storage

| | |
|-----------------|----------------------------------------------------------------------------------------------------|
| Storage | Store at 4°C valid for 12 months or -20°C valid for long term storage, avoid freeze / thaw cycles. |
| Shipping | Ice bag |

Background

CD19 protein is a 95 kDa transmembrane glycoprotein that plays a central role in B cell activation and humoral immune responses. CD19 is expressed throughout B cell development from pre-B cells through mature B cells, and it is commonly used as a B cell lineage marker. It is required for the responsiveness of mature B cell to antigen stimulation, germinal center development, and antibody affinity maturation. The CD19 protein associates with the B cell antigen receptor (BCR), CD81, CD38, CD21, CD22, and IFITM1/CD225/Leu13. These associations enable CD19 to amplify B cell signaling and reduce the threshold for antigen stimulation through the BCR.

For Research Use Only