

# Recombinant Human Interleukin-25/IL-25 Protein (His Tag)



Catalog Number:PKSH032634

**Note:** Centrifuge before opening to ensure complete recovery of vial contents.

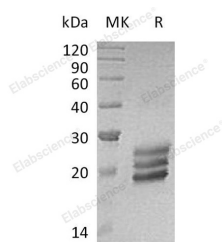
## Description

<b>Synonyms</b>	Interleukin-25;IL-25;Interleukin-17E;IL-17E;IL25;IL17E
<b>Species</b>	Human
<b>Expression Host</b>	HEK293 Cells
<b>Sequence</b>	Tyr33-Gly177
<b>Accession</b>	Q9H293
<b>Calculated Molecular Weight</b>	17.8 kDa
<b>Observed molecular weight</b>	20-26 kDa
<b>Tag</b>	C-His

## Properties

<b>Purity</b>	> 95 % as determined by reducing SDS-PAGE.
<b>Endotoxin</b>	< 1.0 EU per µg of the protein as determined by the LAL method.
<b>Storage</b>	Generally, lyophilized proteins are stable for up to 12 months when stored at -20 to -80°C. Reconstituted protein solution can be stored at 4-8°C for 2-7 days. Aliquots of reconstituted samples are stable at < -20°C for 3 months.
<b>Shipping</b>	This product is provided as lyophilized powder which is shipped with ice packs.
<b>Formulation</b>	Lyophilized from a 0.2 µm filtered solution of 20mM Tris-HCl, 150mM NaCl, 1mM EDTA, pH 8.0. Normally 5 % - 8 % trehalose, mannitol and 0.01 % Tween80 are added as protectants before lyophilization. Please refer to the specific buffer information in
<b>Reconstitution</b>	Please refer to the printed manual for detailed information.

## Data



> 95 % as determined by reducing SDS-PAGE.

## Background

Interleukin 25 (IL-25) belongs to the Interleukin 17 (IL-17) family of proteins, which is comprised of six members (IL-17, IL-17B through IL-17F). These proteins are secreted and are structurally related by sharing a conserved cysteine-knot fold near the C-terminus, but have considerable sequence divergence at the N-terminus. With the exception of IL-17B, which exists as a non-covalently linked dimer, all IL-17 family members are disulfide-linked dimers. IL-17 family proteins are pro-inflammatory cytokines that induce local cytokine production and are involved in the regulation of immune functions. Human interleukin-17E (IL17E), also referred to as Interleukin-25 (IL25), is a distinct member of the IL17 cytokine family comprised of at least six members sharing a conserved cysteine-knot structure but divergent at the N-

## For Research Use Only

A Reliable Research Partner in Life Science and Medicine

Toll-free: 1-888-852-8623

Web: [www.elabscience.com](http://www.elabscience.com)

Tel: 1-832-243-6086

Email: [techsupport@elabscience.com](mailto:techsupport@elabscience.com)

Fax: 1-832-243-6017

# Recombinant Human Interleukin-25/IL-25 Protein (His Tag)



Catalog Number: PKSH032634

---

terminus. IL25 is a glycoprotein secreted as dimers by innate effector eosinophils and basophils, and present at very low levels in various peripheral tissues. IL25, together with IL17B, are ligands for the cytokine receptor IL17BR, and the cross-linking induces NF- $\kappa$ B activation and production of the proinflammatory chemokine IL-8, as well as ERK, JNK, and p38 activation. Overexpression of IL25 gene in transgenic mice suggested that this cytokine can regulate hematopoietic and immune functions, and additionally is identified as a proinflammatory cytokine favoring Th2-type immune responses possibly by enhancing the maintenance and functions of adaptive Th2 memory cells.

---

## For Research Use Only

A Reliable Research Partner in Life Science and Medicine

Toll-free: 1-888-852-8623

Web: [www.elabscience.com](http://www.elabscience.com)

Tel: 1-832-243-6086

Email: [techsupport@elabscience.com](mailto:techsupport@elabscience.com)

Fax: 1-832-243-6017