

Recombinant Human FAM3D Protein (His Tag)

Catalog Number: PKSH032963

Note: Centrifuge before opening to ensure complete recovery of vial contents.

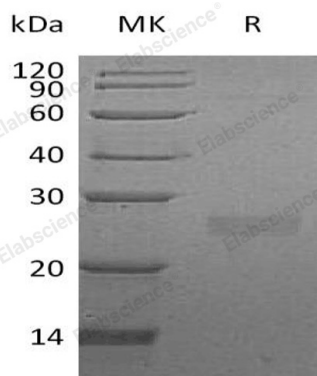
Description

Species	Human
Source	HEK293 Cells-derived Human FAM3D protein Tyr26-Phe224, with an C-terminal His
Calculated MW	23.1 kDa
Observed MW	26 kDa
Accession	Q96BQ1
Bio-activity	Not validated for activity

Properties

Purity	> 90 % as determined by reducing SDS-PAGE.
Concentration	Subject to label value.
Endotoxin	< 1.0 EU per µg of the protein as determined by the LAL method.
Storage	Store at < -20°C, stable for 6 months. Please minimize freeze-thaw cycles.
Shipping	This product is provided as liquid. It is shipped at frozen temperature with blue ice/gel packs. Upon receipt, store it immediately at < -20°C.
Formulation	Supplied as a 0.2 µm filtered solution of 20mM PB, 150mM NaCl, pH 7.2.

Data



> 90 % as determined by reducing SDS-PAGE.

Background

Protein FAM3D is a novel cytokine-like protein that belongs to the FAM3 family. Human FAM3D is synthesized as a 224 amino acid precursor that contains a 25 amino acid signal sequence and a 199 amino acid mature chain. FAM3D is identified based on structural, but not sequence, homology to short chain cytokines including IL-2, IL-4 and GM-CSF. FAM3 proteins are four helix bundle cytokines with four conserved cysteines in all members (FAM3A-D). FAM3B is highly expressed in alpha and beta cells of the pancreas and is being investigated as a potential contributor to beta cell death and development of Type I Diabetes.