

CRMP3 Polyclonal Antibody

catalog number: E-AB-12334

Note: Centrifuge before opening to ensure complete recovery of vial contents.

Description

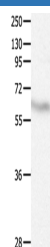
Reactivity	Human;Mouse;Rat
Immunogen	Synthetic peptide of human DPYSL4
Host	Rabbit
Isotype	IgG
Purification	Affinity purification
Conjugation	Unconjugated
buffer	Phosphate buffered solution, pH 7.4, containing 0.05% stabilizer and 50% glycerol.

Applications

Recommended Dilution

WB	1:500-1:1000
-----------	--------------

Data



Western Blot analysis of Human fetal brain tissue using
CRMP3 Polyclonal Antibody at dilution of 1:500

Calculated-MV:62 kDa

Preparation & Storage

Storage	Store at -20°C Valid for 12 months. Avoid freeze / thaw cycles.
Shipping	The product is shipped with ice pack, upon receipt, store it immediately at the temperature recommended.

Background

Collapsin response mediator protein 3 is an enzyme that in humans is encoded by the CRMP3 gene. It is necessary for signaling by class 3 semaphorins and subsequent remodeling of the cytoskeleton. And plays a role in axon guidance, neuronal growth cone collapse and cell migration. Homotetramer, and heterotetramer with CRMP1, DPYSL2, DPYSL3 or DPYSL5. Interacts with PLEXA1. Phosphorylated upon DNA damage, probably by ATM or ATR.

For Research Use Only