

# SLC22A8 Polyclonal Antibody

Catalog Number:E-AB-16017



**Note:** Centrifuge before opening to ensure complete recovery of vial contents.

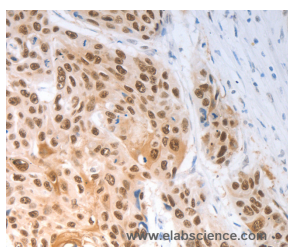
## Description

<b>Reactivity</b>	Human
<b>Immunogen</b>	Synthetic peptide of human SLC22A8
<b>Host</b>	Rabbit
<b>Isotype</b>	IgG
<b>Purification</b>	Affinity purification
<b>Conjugation</b>	Unconjugated
<b>Formulation</b>	PBS with 0.05% sodium azide and 50% glycerol, PH7.4

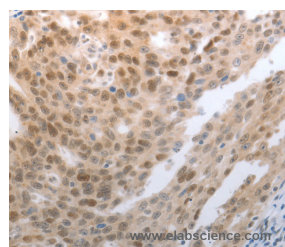
## Applications Recommended Dilution

<b>IHC</b>	1:50-1:200
------------	------------

## Data



Immunohistochemistry of paraffin-embedded Human ovarian cancer tissue using SLC22A8 Polyclonal Antibody at dilution 1:70



Immunohistochemistry of paraffin-embedded Human esophagus cancer tissue using SLC22A8 Polyclonal Antibody at dilution 1:70

## Preparation & Storage

<b>Storage</b>	Store at -20°C. Avoid freeze / thaw cycles.
----------------	---

## Background

This gene encodes a protein involved in the sodium-independent transport and excretion of organic anions, some of which are potentially toxic. The encoded protein is an integral membrane protein and appears to be localized to the basolateral membrane of the kidney. Multiple alternatively spliced transcript variants that encode different protein isoforms have been described for this gene.

## For Research Use Only

A Reliable Research Partner in Life Science and Medicine

Toll-free: 1-888-852-8623

Web: [www.elabscience.com](http://www.elabscience.com)

Tel: 1-832-243-6086

Email: [techsupport@elabscience.com](mailto:techsupport@elabscience.com)

Fax: 1-832-243-6017