

## BMP2 Polyclonal Antibody

**catalog number: E-AB-33728**

**Note:** Centrifuge before opening to ensure complete recovery of vial contents.

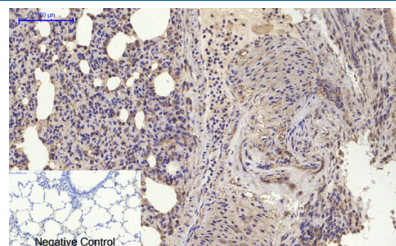
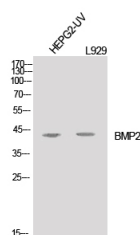
### Description

<b>Reactivity</b>	Human;Mouse;Rat
<b>Immunogen</b>	Synthesized peptide derived from the C-terminal region of human BMP-2.
<b>Host</b>	Rabbit
<b>Isotype</b>	IgG
<b>Purification</b>	Affinity purification
<b>Buffer</b>	Phosphate buffered solution, pH 7.4, containing 0.05% stabilizer, 0.5% protein protectant and 50% glycerol.

### Applications

Applications	Recommended Dilution
<b>WB</b>	1:500-1:2000
<b>IHC</b>	1:100-1:300

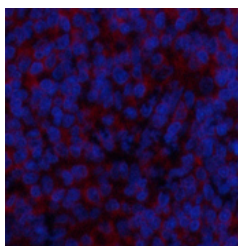
### Data



Western Blot analysis of HepG2-UV, L929 cells using BMP2 Immunohistochemistry of paraffin-embedded Rat lung tissue Polyclonal Antibody at dilution of 1:1000. using BMP2 Polyclonal Antibody at dilution of 1:200.

**Observed-MW:44 kDa**

**Calculated-MW:45 kDa**



Immunofluorescence analysis of Rat spleen tissue using BMP2 Polyclonal Antibody at dilution of 1:200.

### Preparation & Storage

<b>Storage</b>	Store at -20°C Valid for 12 months. Avoid freeze / thaw cycles.
<b>Shipping</b>	The product is shipped with ice pack, upon receipt, store it immediately at the temperature recommended.

### Background

This gene encodes a member of the transforming growth factor-beta (TGFB) superfamily. The encoded preproprotein is proteolytically processed to generate each subunit of the disulfide-linked homodimer, which induces bone and cartilage formation.

### For Research Use Only