

## ENO2 Polyclonal Antibody

catalog number: D-AB-10203L

**Note:** Centrifuge before opening to ensure complete recovery of vial contents.

### Description

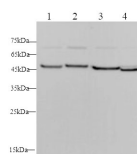
<b>Reactivity</b>	Human;Mouse;Rat
<b>Immunogen</b>	Recombinant Human ENO2 protein expressed by E.coli
<b>Host</b>	Rabbit
<b>Isotype</b>	IgG
<b>Purification</b>	Antigen Affinity Purification
<b>Conjugation</b>	Unconjugated
<b>Buffer</b>	PBS with 0.05% Proclin300, 1% protective protein and 50% glycerol, pH7.4

### Applications

### Recommended Dilution

<b>WB</b>	1:500-1:1000
-----------	--------------

### Data



Western blot with ENO2 Polyclonal antibody at dilution of 1:500. lane 1:SH-SY5Y whole cell lysate, lane 2:HeLa whole cell lysate, lane 3:Mouse brain, lane 4:Rat brain

**Observed-MW:47 kDa**

**Calculated-MW:47 kDa**

### Preparation & Storage

<b>Storage</b>	Store at -20°C Valid for 12 months. Avoid freeze / thaw cycles.
<b>Shipping</b>	The product is shipped with ice pack, upon receipt, store it immediately at the temperature recommended.

### Background

Enolase 2(2-phospho-D-glycerate hydrolyase; also Neuron-specific Enolase,NSE,neural enolase and gamma-enolase) is a 46 kDa member of the Enolase family of enzymes. It is expressed in developing neurons and glia, is known to catalyze the generation of phosphoenolpyruvate, and is suggested to possess neurotrophic activity for neurons, likely through an extracellular mechanism. Human Enolase 2 is 434 amino acids(aa) in length. The enzymatic site spans most of the length of the molecule. Enolase 2 exists as both a noncovalently-linked homodimer, or heterodimer with alpha-enolase. Full-length human Enolase 2 shares 99% aa identity with both mouse and canine Enolase 2. It shares 83% aa identity with human enolases 1 and 3.