

CCL2 Polyclonal Antibody

catalog number: E-AB-40274

Note: Centrifuge before opening to ensure complete recovery of vial contents.

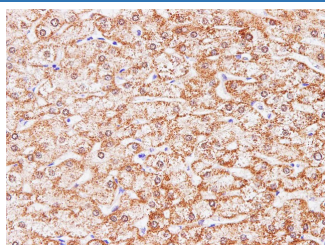
Description

| | |
|---------------------|--|
| Reactivity | Human;Mouse;Rat |
| Immunogen | Recombinant Human C-C motif chemokine 2 protein |
| Host | Rabbit |
| Isotype | IgG |
| Purification | Antigen Affinity Purification |
| Buffer | PBS with 0.05% Proclin300, 1% protective protein and 50% glycerol, pH7.4 |

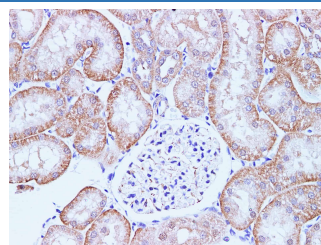
Applications Recommended Dilution

| | |
|------------|-------------|
| IHC | 1:100-1:200 |
|------------|-------------|

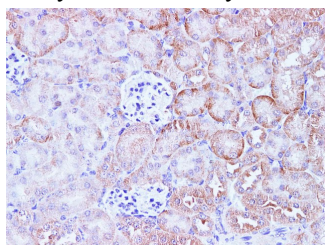
Data



Immunohistochemistry of paraffin-embedded Human liver using CCL2 Polyclonal Antibody at dilution of 1:100



Immunohistochemistry of paraffin-embedded Rat kidney using CCL2 Polyclonal Antibody at dilution of 1:100



Immunohistochemistry of paraffin-embedded Mouse kidney using CCL2 Polyclonal Antibody at dilution of 1:100

Preparation & Storage

| | |
|-----------------|--|
| Storage | Store at -20°C Valid for 12 months. Avoid freeze / thaw cycles. |
| Shipping | The product is shipped with ice pack, upon receipt, store it immediately at the temperature recommended. |

Background

This gene is one of several cytokine genes clustered on the q-arm of chromosome 17. Cytokines are a family of secreted proteins involved in immunoregulatory and inflammatory processes. The protein encoded by this gene is structurally related to the CXC subfamily of cytokines. Members of this subfamily are characterized by two cysteines separated by a single amino acid. This cytokine displays chemotactic activity for monocytes and basophils but not for neutrophils or eosinophils. It has been implicated in the pathogenesis of diseases characterized by monocytic infiltrates, like psoriasis, rheumatoid arthritis and atherosclerosis. It binds to chemokine receptors CCR2 and CCR4.

For Research Use Only