

Sumo-Tag Polyclonal Antibody

catalog number: **E-AB-40553**

Note: Centrifuge before opening to ensure complete recovery of vial contents.

Description

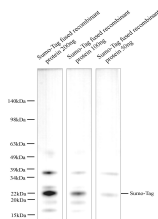
Reactivity	All
Immunogen	Recombinant Sumo protein
Host	Rabbit
Isotype	IgG
Purification	Antigen Affinity Purification
Buffer	PBS with 0.05% Proclin300, 1% protective protein and 50% glycerol, pH7.4

Applications

Recommended Dilution

WB	1:500-1:1000
-----------	--------------

Data



Western blot with Anti Sumo-Tag Polyclonal Antibody at dilution of 1:1000. Lane 1:Sumo-Tag fused recombinant protein 200ng,Lane 2:Sumo-Tag fused recombinant protein 100ng,Lane 3:Sumo-Tag fused recombinant protein 50ng.

Observed-MW:26 kDa
Calculated-MW:20-39 kDa

Preparation & Storage

Storage	Store at -20°C Valid for 12 months. Avoid freeze / thaw cycles.
Shipping	The product is shipped with ice pack, upon receipt, store it immediately at the temperature recommended.

Background

SUMO is short for Small Ubiquitin-like Modifier, the 100 amino acid sequence, which is necessary for regulation of protein transport and is important for controlling transcription for eukaryotic cells. Sumo tag is most frequently used as N-end fus

For Research Use Only